



TOOLS

Vaughan & Bushnell Manufacturing Co.

Makers of

FINE TOOLS

Catalogue No. 27

THIS catalogue makes all previous issues void. All list prices in any of our other catalogues are hereby cancelled. In ordering, kindly use our numbers and descriptions. Prices are subject to change without notice.

All claims for allowance must be made *promptly* on receipt of goods. Remittances must be made in par funds in Chicago or New York.

We will gladly replace, if returned to us, any tool stamped with our name, that may prove defective either in material or workmanship. No edge tool will be replaced that has been reground.

Every article we manufacture is closely inspected and severely tested before leaving our factory. We have a thoroughly trained organization and all questions of shop practice receive the personal attention of the officers of this Company.

Established 1869

Incorporated 1882

Cable Address, Vaunbush — Chicago
Western Union Code

CHICAGO, ILLINOIS, U. S. A.
2114 Carroll Avenue

Branch Sales Offices and Warehouses: New York City and Boston, Mass.

1927

What Everyone Should Know About Vaughan's Expansion Wedge

THE positive wedging of the hammer and hatchet handle to the head was a problem which apparently defied a practical solution until the advent of Vaughan's Expansion Wedge. This wedge completely solves the problem.

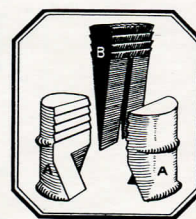


Pat. Dec. 6, 1921—
Oct. 17, 1922

It consists of three parts, two pins and a tapered wedge. In assembling, a hole is drilled into the end of the handle. This hole has a smaller diameter at the bottom than at the top. The two pins are inserted into the hole and the wedge driven between them. The wedge being tapered, spreads the pins at the bottom of the hole as well as their full length. This binds the wood firmly

against the entire sides of the eye of the hammer.

Ordinary wedges work loose eventually and cannot be reset so they will stay tight. The VAUGHAN'S EXPANSION WEDGE can be easily reset. If the handle shows any tendency to become loose, it may be retightened by setting the wedge a notch or two deeper. The wedge assures an absolutely tight handle at all times.



Pat. Dec. 6, 1921—
Oct. 17, 1922

**V & B Hammers and Hatchets are Tested and Approved by
the Underwriters
Laboratories, Inc.**

The Underwriters' Laboratories was incorporated in 1901 for the protection of the public, the building of higher standards of merchandise and the maintenance of those standards. Its work is directed toward the prevention of accidents.

**UNDERWRITERS' LABORATORIES
INSPECTED TOOL
VAUGHAN & BUSHNELL MFG. CO.
CHICAGO, U. S. A. ☐ ISSUE**

The use of this label is restricted to such articles as are found to conform in all essentials to the standards established.

How the Underwriters' Laboratories Tested V & B Hammers and Hatchets

Three samples were subjected to a vibrating and impact test on a vibrating machine by raising and lowering the handle, permitting the tool to strike against a steel bar. This operation was continued for ten days at the rate of 40 strokes a minute. **Result: No apparent objectionable effects noted.**

Three of the tools were immersed in water and allowed to remain for one month. Other tools were placed in an electric furnace and heated to 100 degrees F. for 24 hours. Two other tools were heated for five hours to 200 degrees F. Other tools were left in a damp room for a period of about two months. After these soaking and drying tests, the tools were subjected to the impact and vibration test. **Results: No apparent effects noticeable.**

The faces of the tools were tested for hardness by the Brinell testing machine and the scleroscope. The claws were struck with a hammer and were bounded off a steel block to determine their resiliency. The tools were mounted in the Olsen machine to determine the strength provided by the Vaughan's Expansion Wedge as compared to the ordinary wedges. **It took 900 lbs. more to pull the handle through the head with Vaughan's Expansion Wedge.**

Examinations of the tools indicated that there were no flaws or faulty construction in any of the tools inspected. The analysis showed a refined grade of steel. Factory methods show that uniform metal products can be assured. Every tool is examined and tested for flaws and defects at the factory.



V & B Hammers

DROP FORGED from special analysis steel in positive dies—individually tempered and tested—uniform in shape and performance—V & B Hammers have an established popular demand of thousands every year.

The non-slip claw is specially designed to firmly grip any size nail from brad to spike, and the shape of the sweep provides for maximum leverage, with least effort, when pulling. The extreme ends of the claw are ground as thin as practical for prying.

The sides of all V & B Nail Hammers are carefully crowned to prevent denting wood in matching flooring and wainscoting, and the face is particularly crowned to prevent marring of wood-work when driving.

The binding eye which is forged smaller at the center than at the ends, acts as a positive lock to hold the handle tight and secure.

Only the best of second growth white hickory is used for handles, which are shaped to give just the right hang and balance to each hammer.

Carpenters claim they can work longer with V & B Hammers without tiring. They swing easy—and hit hard!



V&B
Hammers

V & B Vanadium Hammers

With Vaughan's Patented Expansion Wedge and Underwriters' Laboratories Label

PATENTED DEC. 6, 1921—OCT. 17, 1922

A Tool of Distinctive Quality

V & B Vanadium Hammers are the final accomplishment of fifty-five years of quality tool manufacture.

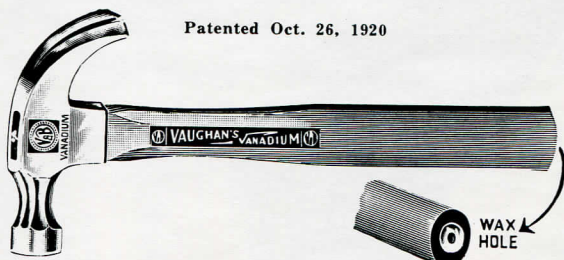
Made from special V & B formula vanadium steel, handled with the finest hand-shaved second growth white hickory, and individually inspected—they are uniquely superior.

The octagon neck and round faced pattern are neat and practical, and the special non-slip claw firmly grips either a brad or a spike.

The wax hole is an additional patented feature, especially appreciated by those who work with hard wood.

The patented Vaughan's Expansion Wedge, with which this hammer is equipped, firmly locks the handle tight—and is absolutely positive insurance of a tight head at all times.

A special shaped handle, and carefully designed head gives a hammer of minimum vibration and nice balance—and a tool of particular merit.



Patented Oct. 26, 1920

Vanadium Nail Hammer

Full Polished, Octagon Neck
Round Face, Hand Shaved Handle

No.	Weight, ozs.	Length ins.	Wgt., lbs., per doz.	Each
41	20	14	22	\$2.50
41½	16	13	18	2.50
42	13	13	15	2.50
42½	10	12½	12	2.50

Packed in individual cartons.



Patented Oct. 26, 1920

Vanadium Ripping Hammer

Full Polished, Octagon Neck
Round Face, Hand Shaved Handle

No.	Weight, ozs.	Length ins.	Wgt., lbs., per doz.	Each
31	20	14	22	\$2.50
31½	16	13	18	2.50

Packed in individual cartons.



Patented Oct. 9, 1917

999 Tradesman's Hammer

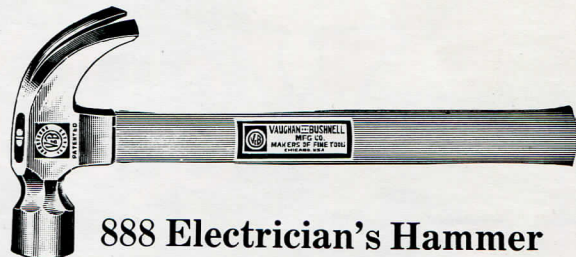
Full Polished
White Hickory Handles

Designed for Steam Fitters, Plumbers, Electricians, Millwrights, Cement Workers and Carpenters heavy work. Especially adapted for use on drills and concrete forms.

No.	Weight, ozs.	Length ins.	Wgt., lbs., per doz.	Each
999	20	14	23	\$2.50

Packed six in a box.

Six dozen in a case.



888 Electrician's Hammer

Full Polished
White Hickory Handles

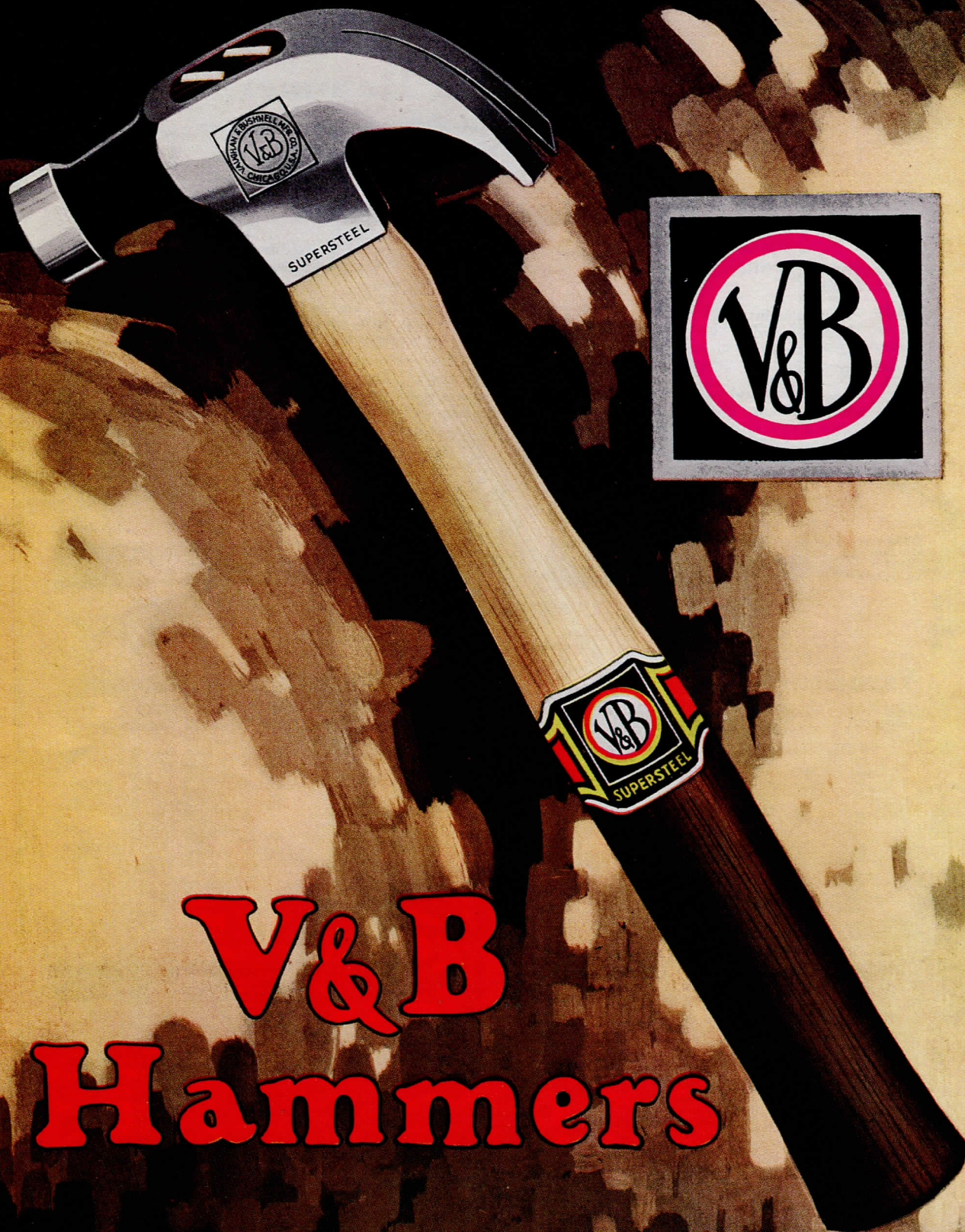
Designed for the Electrician or Carpenter who demands a heavy nail hammer. This hammer is especially adapted for use on drills and heavy duty work.

No.	Weight, ozs.	Length ins.	Wgt., lbs., per doz.	Each
888	20	14	23	\$2.50

Packed six in a box.

Six dozen in a case.

Weight ounces does not include handles.



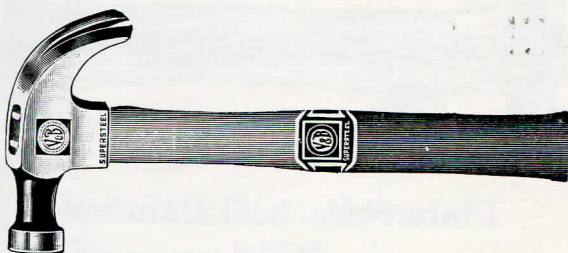
V&B
Hammers

V & B Supersteel Hammers

Quality—Distinctiveness

Extra Refined Steel—Drop Forged—Tempered Faces and Claws

All V & B Nail Hammers have our Non-Slip Claw. They will firmly grip any size nail from brad to spike. The eyes are forged smaller toward the center than at the ends which binds the handle firmly. The sides are crowning and will not dent the wood when matching flooring or wainscoting. The V & B Supersteel is our standard quality and big seller for general use.



Bell Face Nail Hammer

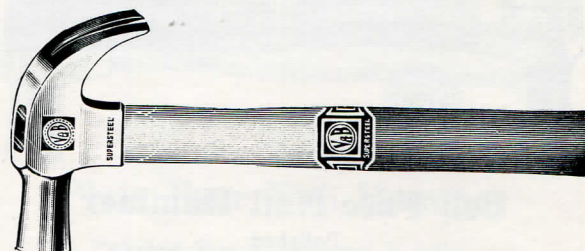
Polished

Two-Tone Hickory Handles

No.	Weight, ozs.	Length, ins.	Wgt., lbs., per doz.	Each
10	24	14	25	\$2.00
11	20	14	21½	1.95
11½	16	13	18½	1.85
12	13	13	14½	1.75
12½	10	12½	12	1.70
13	7	12	9½	1.65
14	5	11	6	1.55

Packed six in a box.

Six dozen in a case.



Plain Face Nail Hammer

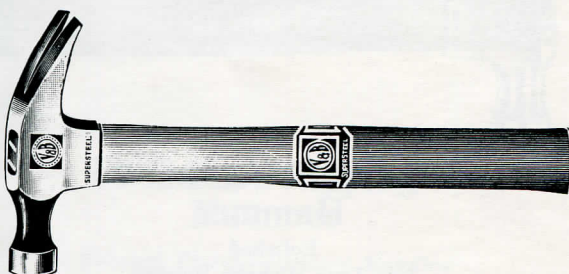
Polished

Two-Tone Hickory Handles

No.	Weight, ozs.	Length, ins.	Wgt., lbs., per doz.	Each
0	28	14	28	\$2.25
0½	24	14	25	2.00
1	20	14	21½	1.95
1½	16	13	18½	1.85
2	13	13	14½	1.75
3	7	12	9½	1.65

Packed six in a box.

Six dozen in a case.



Bell Face Ripping Hammer

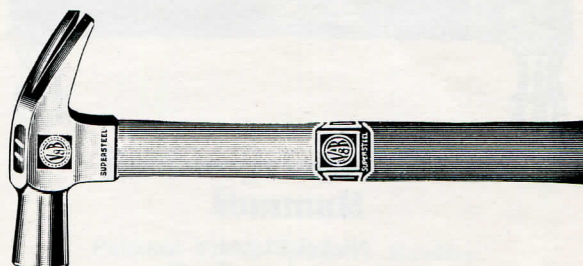
Polished

Two-Tone Hickory Handles

No.	Weight, ozs.	Length, ins.	Wgt., lbs., per doz.	Each
11R	20	14	21½	\$1.95
11½R	16	13	18½	1.85
12R	13	13	14½	1.75

Packed six in a box.

Six dozen in a case.



Plain Face Ripping Hammer

Polished

Two-Tone Hickory Handles

No.	Weight, ozs.	Length, ins.	Wgt., lbs., per doz.	Each
1R	20	14	21½	\$1.95
1½R	16	13	18½	1.85

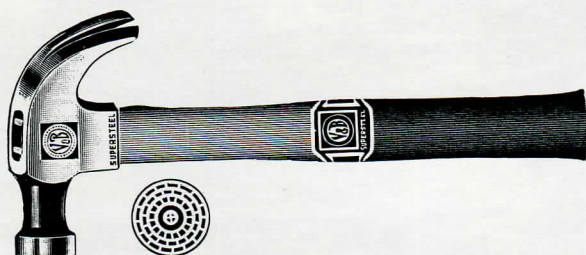
Packed six in a box.

Six dozen in a case.

Weight ounces does not include handles.

V & B Supersteel Hammers

Extra Refined Steel—Drop Forged—Tempered Faces and Claws



Bell Face Nail Hammer

Polished

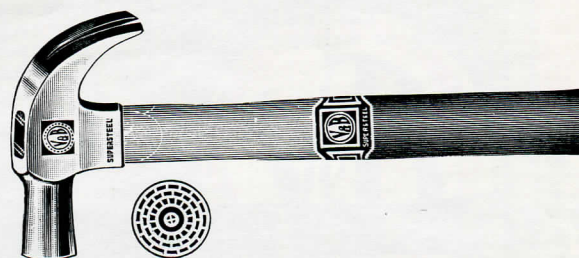
Two-Tone Hickory Handles

These Hammers have concentric milling on the face. They are recommended for use in packing departments.

No.	Weight, ozs.	Length, ins.	Wgt., lbs., per doz.	Each
211	20	14	21½	\$2.20
211½	16	13	18½	2.10

Packed six in a box.

Six dozen in a case.



Plain Face Nail Hammer

Polished

Two-Tone Hickory Handles

These Hammers have concentric milling on the face. They are recommended for use in packing departments.

No.	Weight, ozs.	Length, ins.	Wgt., lbs., per doz.	Each
200	28	14	28	\$2.50
201	20	14	21½	2.20
201½	16	13	18½	2.10

Packed six in a box.

Six dozen in a case.



Double Octagon Nail Hammer

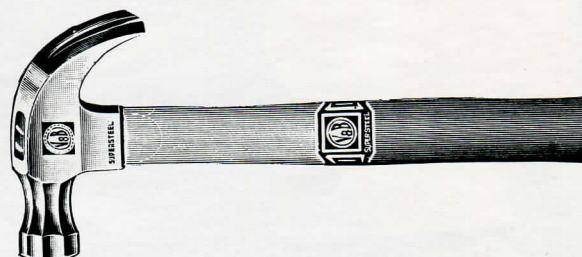
Nickel Plated

Ebonized Hickory Handles

No.	Weight, ozs.	Length, ins.	Wgt., lbs., per doz.	Each
501N	21	14	22	\$2.85
501½N	17	13	19	2.75
502N	14	13	15	2.65

Packed six in a box.

Six dozen in a case.



Double Octagon Nail Hammer

Polished

Two-Tone Hickory Handles

No.	Weight, ozs.	Length, ins.	Wgt., lbs., per doz.	Each
01	21	14	22	\$2.25
01½	17	13	19	2.15
02	14	13	15	2.05

This Hammer also furnished with octagon handles at additional cost. Nos. DO1, DO1½, DO2.

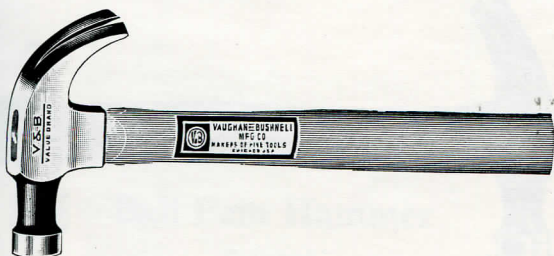
Packed six in a box.

Six dozen in a case.

Weight ounces does not include handles.

V & B Value Brand Hammers

Forged Steel and Tempered—A Serviceable Hammer at a Moderate Price



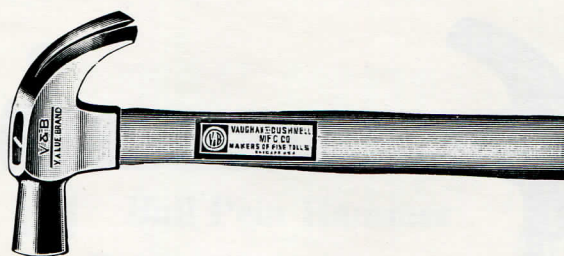
Bell Face Nail Hammer

Polished Finish—Hickory Handles

No.	Weight, ozs.	Length, ins.	Wgt., lbs., per doz.	Each
411	20	14	21½	\$1.70
411½	16	13	18½	1.60
412	13	13	14½	1.50
413	7	12	9½	1.40

Packed six in a box.

Six dozen in a case.



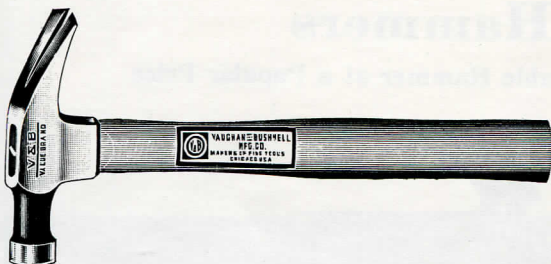
Plain Face Nail Hammer

Polished Finish—Hickory Handles

No.	Weight, ozs.	Length, ins.	Wgt., lbs., per doz.	Each
401	20	14	21½	\$1.70
401½	16	13	18½	1.60
402	13	13	14½	1.50
403	7	12	9½	1.40

Packed six in a box.

Six dozen in a case.



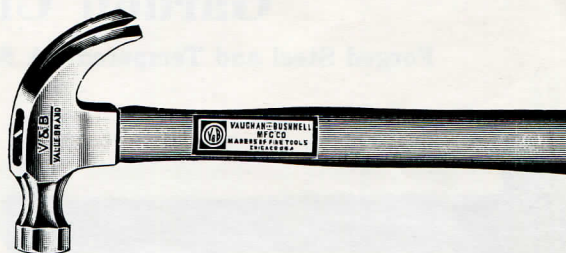
Bell Face Ripping Hammer

Polished Finish—Hickory Handles

No.	Weight, ozs.	Length, ins.	Wgt., lbs., per doz.	Each
411R	20	14	21½	\$1.70
411½R	16	13	18½	1.60

Packed six in a box.

Six dozen in a case.



Double Octagon Nail Hammer

Polished Finish—Hickory Handles

No.	Weight, ozs.	Length, ins.	Wgt., lbs., per doz.	Each
71	21	14	22	\$1.95
71½	17	13	19	1.85
72	14	13	15	1.75

This Hammer also finished with enameled neck.
Nos. 71E each \$1.85, 71½E each \$1.75, 72E each \$1.65.

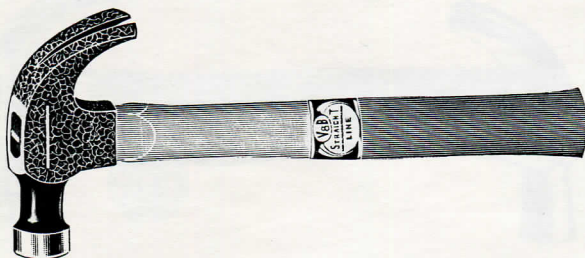
Packed six in a box.

Six dozen in a case.

Weight ounces does not include handles.

Straight Line Hammers

Attractive Crystal Finish—Drop Forged and Tempered—Exceptional Value
Moderately Priced



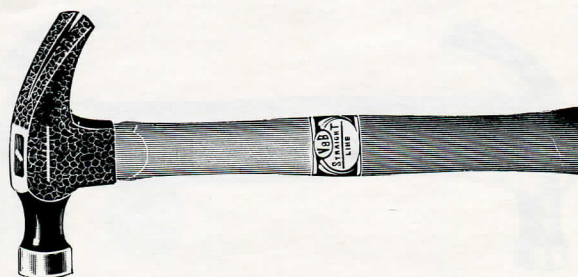
Bell Face Nail Hammer

Crystal Finish—Two-Tone Hickory Handles

No.	Weight, ozs.	Length, ins.	Wgt., lbs., per doz.	Each
311	20	14	21½	\$1.35
311½	16	13	18½	1.25
312	13	13	14½	1.10
313	7	12	9½	1.00

Packed six in a box.

Six dozen in a case.



Bell Face Ripping Hammer

Crystal Finish—Two-Tone Hickory Handles

No.	Weight, ozs.	Length, ins.	Wgt., lbs., per doz.	Each
311R	20	14	21½	\$1.35
311½R	16	13	18½	1.25

Packed six in a box.

Six dozen in a case.

Garden City Hammers

Forged Steel and Tempered—A Serviceable Hammer at a Popular Price



Bell Face Nail Hammer

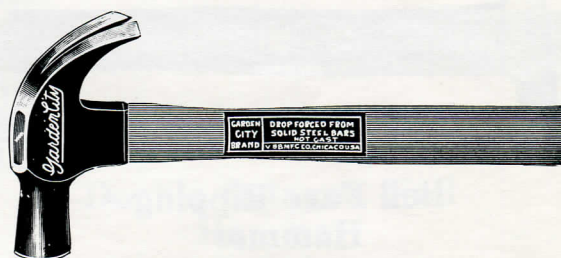
Black Finish—Polished Claws

Walnut Stained Hickory Handles

No.	Weight, ozs.	Length, ins.	Wgt., lbs., per doz.	Each
111B	20	14	21½	\$1.30
111½B	16	13	18½	1.20
112B	13	13	14½	1.10
113B	7	12	9½	1.00

Packed six in a box.

Six dozen in a case.



Plain Face Nail Hammer

Black Finish—Polished Claws

Walnut Stained Hickory Handles

No.	Weight, ozs.	Length, ins.	Wgt., lbs., per doz.	Each
101B	20	14	21½	\$1.30
101½B	16	13	18½	1.20
102B	13	13	14½	1.10
103B	7	12	9½	1.00

Packed six in a box.

Six dozen in a case.

Weight ounces does not include handles.

V & B Supersteel Hammers

Extra Refined Steel—Drop Forged—Hardened Faces and Peins

These Hammers are individually tempered and tested. They are the best that can be produced.



Ball Pein Hammer

Polished

Two-Tone Hickory Handles

No.	Weight, ozs.	Length, ins.	Wgt., lbs., per doz.	Each
7/0	2	10 1/4	3 1/4	\$1.35
5/0	4	11	5 1/2	1.35
4/0	6	12	7 1/4	1.35
3/0	8	13	10 1/2	1.35
2/0	12	14	14	1.35
0	16	14	16	1.40
1	20	15	21	1.50
2	24	16	24	1.60
3	28	17	28	1.75
4	32	17	30	1.85
6	40	17 1/2	36	2.15
8	48	17 1/2	43 1/2	2.50

Packed four in a box.

Six dozen in a case.



Ball Pein Hammer

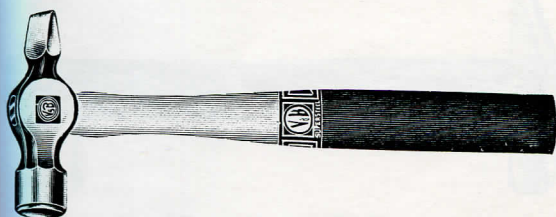
Black Finish, Polished Face and Pein

Hickory Handles

No.	Weight, ozs.	Length, ins.	Wgt., lbs., per doz.	Each
7/0B	2	10 1/4	3 1/4	\$1.00
5/0B	4	11	5 1/2	1.00
4/0B	6	12	7 1/4	1.00
3/0B	8	13	10 1/2	1.00
2/0B	12	14	14	1.00
0 B	16	14	16	1.05
1 B	20	15	21	1.15
2 B	24	16	24	1.25
3 B	28	17	28	1.35
4 B	32	17	30	1.45
6 B	40	17 1/2	36	1.65
8 B	48	17 1/2	43 1/2	1.85

Packed four in a box.

Six dozen in a case.



Cross Pein Hammer

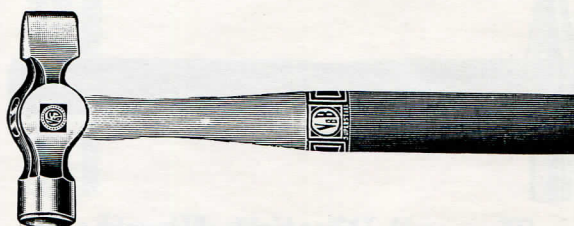
Polished

Two-Tone Hickory Handles

No.	Weight, ozs.	Length, ins.	Wgt., lbs., per doz.	Each
0	16	14	16	\$1.70
1	20	15	21	1.85
2	24	16	24	1.95
3	28	17	28	2.10
4	32	17	30	2.25

Packed four in a box.

Six dozen in a case.



Straight Pein Hammer

Polished

Two-Tone Hickory Handles

No.	Weight, ozs.	Length, ins.	Wgt., lbs., per doz.	Each
0	16	14	16	\$1.70
1	20	15	21	1.85
2	24	16	24	1.95
3	28	17	28	2.10
4	32	17	30	2.25

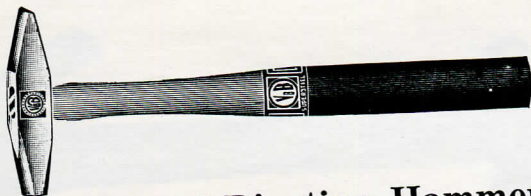
Packed four in a box.

Six dozen in a case.

Weight ounces does not include handles.

V & B Supersteel Hammers

Extra Refined Steel—Drop Forged—Hardened Faces and Peins



Machinists' Riveting Hammer

Polished Two-Tone Hickory Handles			
No.	Weight, ozs.	Length, ins.	Wgt., lbs., per doz.
0	4	11	6½
1	7	12	7½
2	9	13	9½
3	12	13	12
4	15	14	16
5	18	14	18½
			Each
			\$1.20
			1.25
			1.30
			1.35
			1.40
			1.55

Saw Setting Hammer

This Hammer is the same design as our Riveting Hammer, but is made of a special steel adapted for this purpose.

No.	Weight, ozs.	Length, ins.	Wgt., lbs., per doz.	Each
1	7	12	7½	\$1.45

Packed six in a box.

Six dozen in a case.



Tile Setters' and Radio Hammer

Polished Finish
Two-Tone Hickory Handles

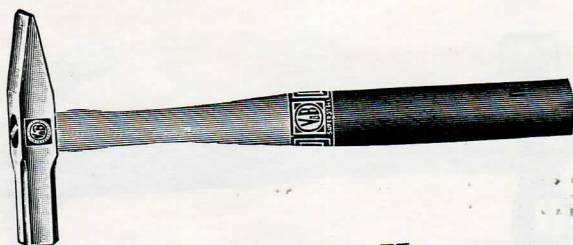
This lightweight Hammer is designed to serve the tile setting trade. It is of the same high quality supersteel that we use for all high grade tools.

This Hammer is also the correct pattern and weight for use around radio sets. It can be sold for either tile setting or radio work.

No.	Weight, ozs.	Length, ins.	Wgt., lbs., per doz.	Each
1	3	9½	3½	\$1.50

Packed six in a box.

Six dozen in a case.



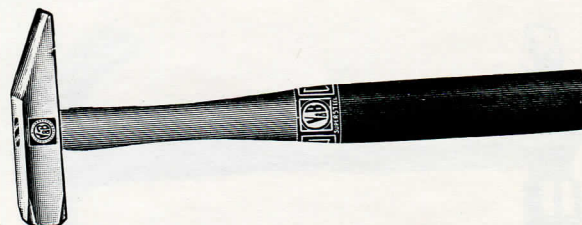
Tinnners' Riveting Hammer

Polished
Two-Tone Hickory Handles

No.	Weight, ozs.	Length, ins.	Wgt., lbs., per doz.	Each
1	8	13	11½	\$1.25
2	12	14	13½	1.30
3	16	15	15½	1.45

Packed six in a box.

Six dozen in a case.



Tinnners' Paneing Hammer

Polished
Two-Tone Hickory Handles

No.	Face	Weight, ozs.	Length, ins.	Wgt., lbs., per doz.	Each
1	¾	8	13	10	\$1.25
2	7/8	12	14	13	1.30
3	1	16	15	18	1.45

Packed six in a box.

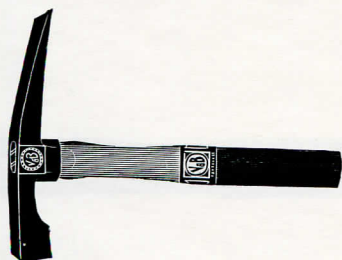
Six dozen in a case.

Weight ounces does not include handles.

V & B Supersteel Hammers

Extra Refined Steel—Drop Forged—Hardened Faces and Cutting Edges

V & B Bricklayers' Hammers and Scutches are of the adze eye pattern and have a tapered eye which assures a tight handle. They are designed so as to have a perfect balance and the face and chisel are tempered to give the maximum of service.



Bricklayers' Hammer

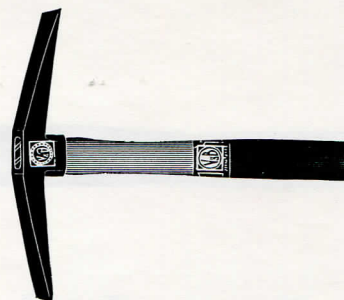
Black Finish

Two-Tone Hickory Handles				
No.	Weight, ozs.	Length, ins.	Wgt., lbs., per doz.	Each
0	20	10½	20	\$1.85
1	26	11	25½	1.95
2	34	11	31½	2.10

This Hammer is also furnished with loose handle so that the head may be redressed. If such is desired specify loose handles or otherwise handle will be shipped wedged.

Packed four in a box.

Six dozen in a case.



Bricklayers' Scutch

Black Finish

Two-Tone Hickory Handles				
No.	Weight, ozs.	Length, ins.	Wgt., lbs., per doz.	Each
8	17	10½	18½	\$1.85
10	24	11	24	1.95
12	32	11	31½	2.10

This Scutch is also furnished with loose handle so that the head may be redressed. If such is desired specify loose handles or otherwise handle will be shipped wedged.

Packed four in a box.

Six dozen in a case.



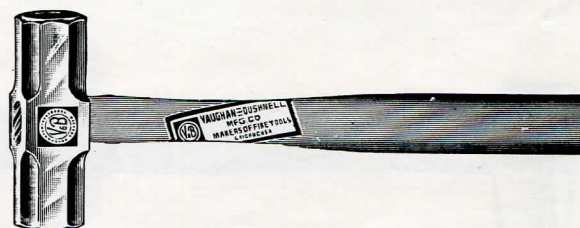
Engineers' Hammer

Polished

White Hickory Handles				
No.	Weight, ozs.	Length, ins.	Wgt., lbs., per doz.	Each
0	18	14	18	\$1.65
1	24	15	23	1.80
2	32	16	28½	1.95
3	40	16	34	2.10
4	48	17	40	2.20

Packed four in a box.

Six dozen in a case.



Double Face Engineers' Hammer

Polished

White Hickory Handles				
No.	Weight, ozs.	Length, ins.	Wgt., lbs., per doz.	Each
2	38	16	32½	\$2.30
3	48	17	43	2.50

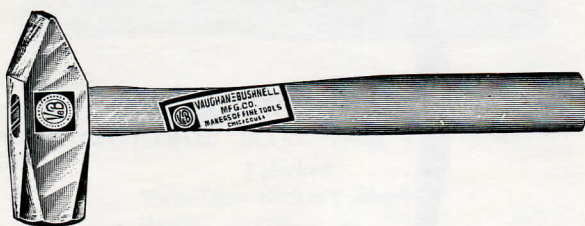
Packed four in a box.

Six dozen in a case.

Weight ounces does not include handles.

V & B Supersteel Hammers

Extra Refined Steel—Drop Forged—Hardened Faces and Peins



Blacksmiths' Hand Hammer

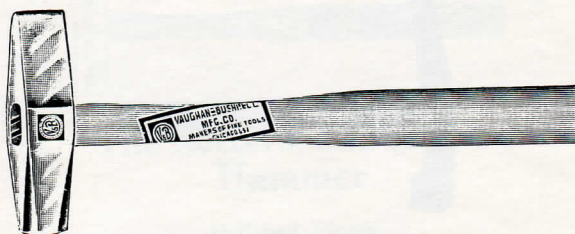
Polished

White Hickory Handles

No.	Weight, ozs.	Length, ins.	Wgt., lbs., per doz.	Each
0	24	15	22½	\$1.80
1	32	16	31	1.95
2	40	16	39	2.10
3	48	17	46	2.20
4	64	17	50	2.35

Packed four in a box.

Six dozen in a case.



Chipping Hammer

Polished

White Hickory Handles

No.	Weight, ozs.	Length, ins.	Wgt., lbs., per doz.	Each
1	24	15	22	\$1.95
2	32	16	31	2.10
3	40	16	34	2.25

Packed four in a box.

Six dozen in a case.



Prospecting Hammer

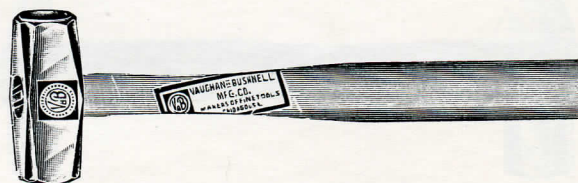
Polished

White Hickory Handles

No.	Weight, ozs.	Length, ins.	Wgt., lbs., per doz.	Each
2	28	15	30	\$2.60

Packed six in a box.

Six dozen in a case.



Drill Sharpening Hammer

Polished

White Hickory Handles

No.	Weight, ozs.	Length, ins.	Wgt., lbs., per doz.	Each
0	22	14	20	\$2.20

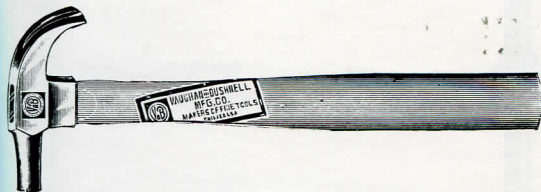
Packed six in a box.

Six dozen in a case.

Weight ounces does not include handles.

V & B Supersteel Hammers

Extra Refined Steel—Drop Forged—Tempered Faces and Claws
Made With Our Non-Slip Claw



Adze Eye Farriers' Hammer

Polished

White Hickory Handles

No.	Weight, ozs.	Length, ins.	Wgt., lbs., per doz.	Each
7	7	13	8	\$1.65

Packed six in a box.

Six dozen in a case.



Adze Eye Farriers' Hammer

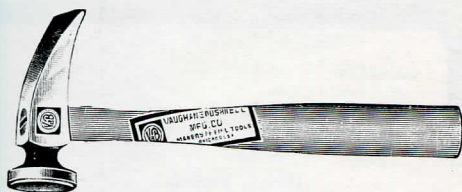
Polished

White Hickory Handles

No.	Weight, ozs.	Length, ins.	Wgt., lbs., per doz.	Each
10	10	13	11 1/2	\$1.70
12	12	14	13 1/2	1.90

Packed six in a box.

Six dozen in a case.



Shoe Hammer

Polished

White Hickory Handles

No.	Weight, ozs.	Length, ins.	Wgt., lbs., per doz.	Each
1	13	10	14	\$1.50

Packed six in a box.

Six dozen in a case.



Farriers' Turning Hammer

Polished Heads, Black Body

White Hickory Handles

No.	Weight, ozs.	Length, ins.	Wgt., lbs., per doz.	Each
0	36	15	33	\$3.50

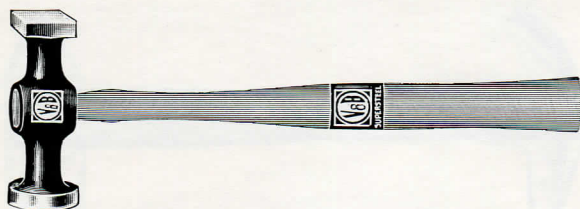
Packed four in a box.

Six dozen in a case.

Weight ounces does not include handles.

V & B Auto Hammers

V & B Bumping and Dinging Hammers are specially designed for automobile fender and body work.



Bumping Hammer

Black Finish, Polished Heads
White Hickory Handles

No.	Weight, ozs.	Length, ins.	Wgt., lbs., per doz.	Each
1	10	12	11	\$1.25

Packed six in a box.

Six dozen in a case.



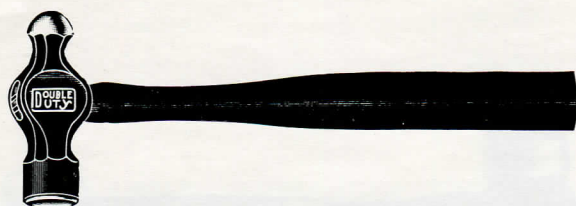
Dinging Hammer

Black Finish, Polished Heads
White Hickory Handles

No.	Weight, ozs.	Length, ins.	Wgt., lbs., per doz.	Each
10	11	11½	14	\$3.00

Packed six in a box.

Six dozen in a case.



Double Duty Automobile Hammer

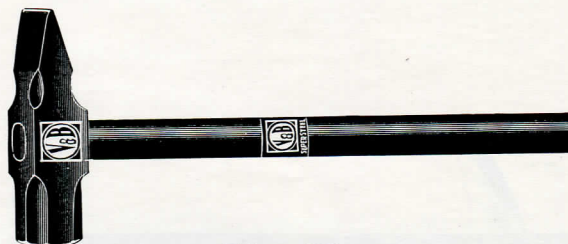
Black Sides, Polished Face and Pein
Black Stained Handles

This Hammer is equipped with short handle, making it specially adaptable for auto kits. Also a handy size for all repair work.

No.	Weight, ozs.	Length, ins.	Wgt., lbs., per doz.	Each
20	12	11	13	\$0.75
30	8	11	10	0.75

Packed six in a box.

Six dozen in a case.



Auto Tire Hammer

Black Finish
Unbreakable Pipe Handle

A heavy Hammer with long pein and unbreakable pipe handle for removing tires. Every garage and tire shop should have this hammer.

No.	Weight, ozs.	Length, ins.	Wgt., lbs., per doz.	Each
100	53	14½	54	\$3.00

Packed four in a box.

Six dozen in a case.

Weight ounces does not include handles.

V & B Supersteel Hammers

Tack Hammers

All V & B Magnetic Hammers are made of Magnet Steel



Upholsterers' Pattern
Polished—Semi-Adze Eye
White Hickory Handles

No.	Lgth., head, ins.	Lgth., over all, ins.	Wgt., lbs., per doz.	Each
4	5¾	11½	7¼	\$1.10

Packed six in a box.

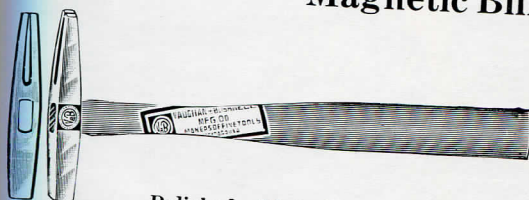


Magnetic Pattern
Polished—Semi-Adze Eye
White Hickory Handles

No.	Lgth., head, ins.	Lgth., over all, ins.	Wgt., lbs., per doz.	Each
5	4¾	11½	6¾	\$1.25

Packed six in a box.

Magnetic Bill Posters' Hammers

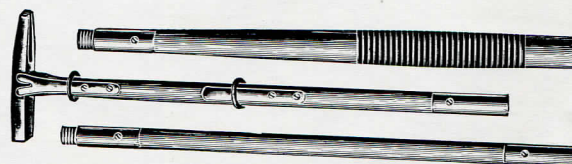


Polished—Plain Eye
White Hickory Handles

No.	Weight, ozs.	Length, head, ins.	Length, over all, ins.	Wgt., lbs., per doz.	Each
45	4	3½	11½	5	\$1.15
55	5	4	11½	6	1.25
85	8	4½	11½	8¼	1.50

Packed six in a box.

Six dozen in a case.



Polished—Plain Eye
Select White Ash Handles

No.	Wgt head ozs., each	Length head, ins.	Length over all, ins.	Handle sections	Wgt. lbs. per doz	Each
56	5	4	36	2-18 in.	11	\$3.00
57	5	4	45	3-15 in.	15	3.50
86	8	4½	36	2-18 in.	13	3.25
87	8	4½	45	3-15 in.	17	4.00

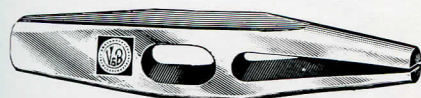
Packed two in a box.

Bill Posters' Hammer Handles

Select White Ash

J36	Jointed, 2 sections, full length 36 inches. Weight, per dozen, 6¾ lbs.	\$2.00
J45	Jointed, 3 sections, full length 45 inches. Weight, per dozen, 10¼ lbs.	2.75
Tack Spring.	Each	0.15
Card Spring.	Each	0.10

Handles packed loose.



Nickel Plated—Heads Only

No.	Lgth., head, ins.	Weight, ozs.	Wgt., lbs., per doz.	Each
50	4	5	4	\$1.15
80	4½	8	6½	1.25

Packed six in a box.

Weight ounces does not include handles.



V&B
Hatchets



V & B Hatchets

The Supersteel Line with attractive two-tone handles.

V & B HATCHETS are DROP FORGED from bars of high grade supersteel. They are made of one piece, therefore, the same quality steel throughout; there is no soft section.

Subjected to special heat treatment and individually tempered, they have a cutting edge that remains keen.

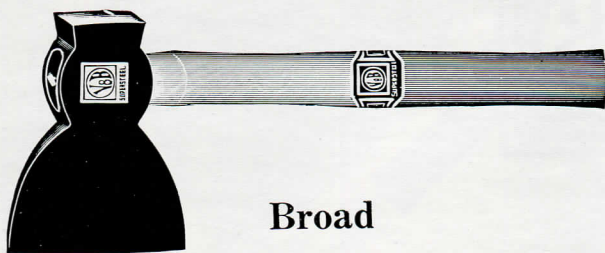
V & B Hatchets are equipped with second growth hickory handles so designed to fit the hand perfectly and the swell end prevents the tool from easily slipping out of the hand.

All patterns have thin bits for rapid cutting.

The Underhill pattern lathing hatchets are made of Vanadium Steel to give added strength to the extra thin blade and greater endurance to the sharp points of the milled head.

V & B Supersteel Hatchets

The Supersteel Line with Patent Leather Finish and Two-Tone Handles

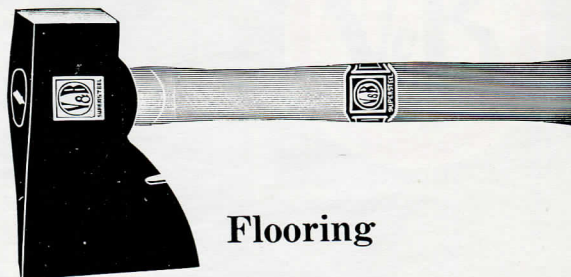


Broad

Patent Leather Finish
Two-Tone Hickory Handles

No.	Width of bit, ins.	Wgt., ozs.	Wgt., lbs., per doz.	Each
1	4	24	22½	\$2.50
2	4½	28	34	2.50
3	5	36	39	3.00
4	5½	42	42	3.00

Packed six in a box.

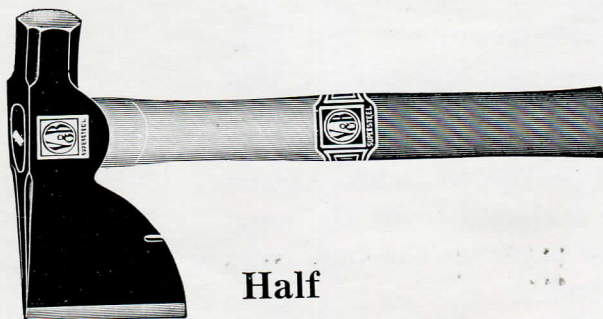


Flooring

Patent Leather Finish
Two-Tone Hickory Handles

No.	Width of bit, ins.	Wgt., ozs.	Wgt., lbs., per doz.	Each
1	3½	20	24	\$2.50
2	4	24	29	2.50

Packed six in a box.

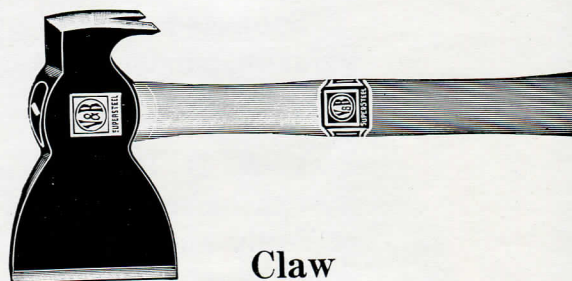


Half

Patent Leather Finish
Two-Tone Hickory Handles

No.	Width of bit, ins.	Wgt., ozs.	Wgt., lbs., per doz.	Each
1	3¼	15	18	\$2.00
2	3⅝	22	24½	2.00
3	4	27	28	2.25

Packed six in a box.



Claw

Patent Leather Finish
Two-Tone Hickory Handles

No.	Width of bit, ins.	Wgt., ozs.	Wgt., lbs., per doz.	Each
1	3½	19	24	\$2.10
2	4	25	30	2.20

Packed six in a box.

Weight ounces does not include handles.

V & B Supersteel Hatchets

The Supersteel Line with Patent Leather Finish and Two-Tone Handles



Shingling

Patent Leather Finish
Two-Tone Hickory Handles

No.	Width of bit, ins.	Wgt., ozs.	Wgt., lbs., per doz.	Each
1	3½	17	19½	\$2.00
2	4	23	25½	2.00

Packed six in a box.

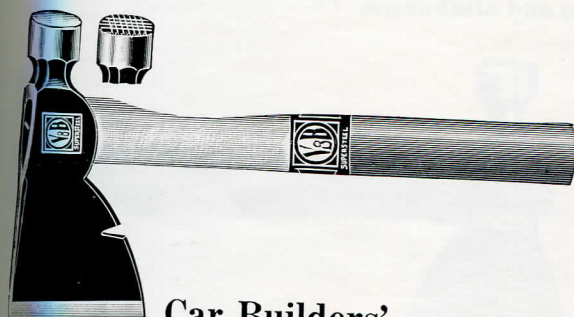


Lathing

Patent Leather Finish
Two-Tone Hickory Handles

No.	Width of bit, ins.	Wgt., ozs.	Wgt., lbs., per doz.	Each
1	2¼	14	13½	\$2.00
2	2½	17	18	2.00

Packed six in a box.



Car Builders'

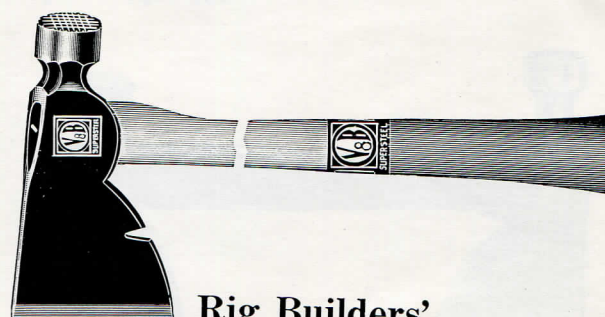
Patent Leather Finish
Two-Tone Hickory Handles

No.	Width of bit, ins.	Wgt., ozs.	Wgt., lbs., per doz.	Each
2	3½	22	24	\$2.50

This same hatchet also furnished with scored head.

No. S2, each\$2.65

Packed six in a box.



Rig Builders'

Patent Leather Finish
Two-Tone Hickory Handles

No.	Width of bit, ins.	Wgt., ozs.	Wgt., lbs., per doz.	Each
2	3½	23	26½	\$2.75

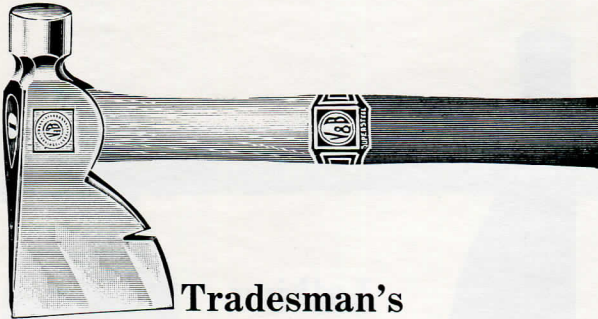
Equipped with 18-inch knob end handle.

Packed six in a box.

Weight ounces does not include handles.

V & B Supersteel Hatchets

The Supersteel Line with Polished Finish and Two-Tone Handles



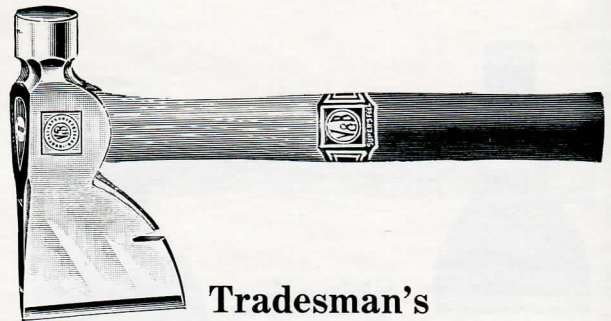
Tradesman's

Single Bevel

Polished Finish
Two-Tone Hickory Handles

No.	Width of bit, ins.	Wgt., ozs.	Wgt., lbs., per doz.	Each
72	3½	22	24	\$3.00

Packed six in a box.



Tradesman's

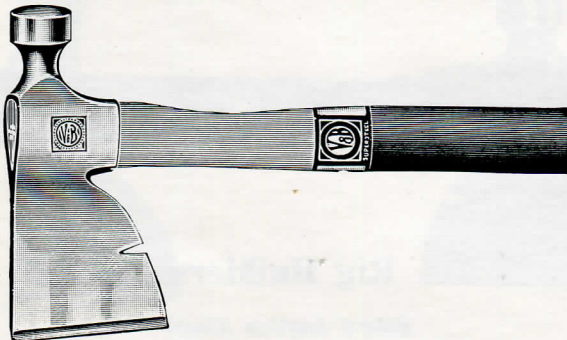
Double Bevel

Polished Finish
Two-Tone Hickory Handles

No.	Width of bit, ins.	Wgt., ozs.	Wgt., lbs., per doz.	Each
82	3½	22	24	\$3.00

Packed six in a box.

The Haines Pattern Hatchets are light weight and have thin bits. They are designed for fine finishing work. They are especially adapted for expert carpenters and mechanics.

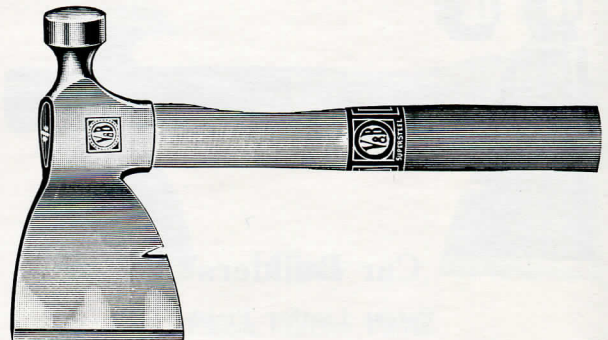


Haines Pattern Half

Polished Finish
Two-Tone Hickory Handles

No.	Width of bit, ins.	Wgt., ozs.	Wgt., lbs., per doz.	Each
101	3¼	16	19	\$3.00
102	3½	19	22	3.00

Packed six in a box.



Haines Pattern Shingling

Polished Finish
Two-Tone Hickory Handles

No.	Width of bit, ins.	Wgt., ozs.	Wgt., lbs., per doz.	Each
101	3½	17	22	\$3.00
102	3¾	20	25	3.00

Packed six in a box.

Weight ounces does not include handles.

V & B Supersteel Hatchets



**Haines
Pattern Lathing**

Polished Finish
Two-Tone Hickory Handles

No.	Width of bit, ins.	Wgt., ozs.	Wgt., lbs., per doz.	Each
101	2 1/8	14	17	\$3.00

Packed six in a box.

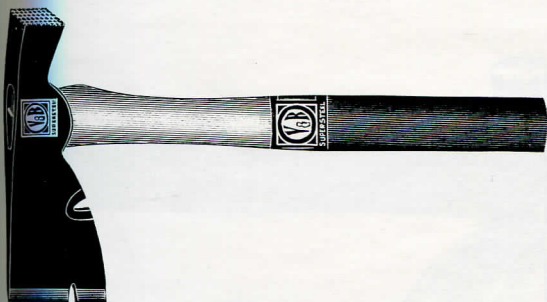


Box Hatchet

Polished Finish
Two-Tone Hickory Handles

No.	Width of bit, ins.	Wgt., ozs.	Wgt., lbs., per doz.	Each
1	2 1/8	12	14	\$3.00
2	2 1/4	16	16	3.00

Packed six in a box.

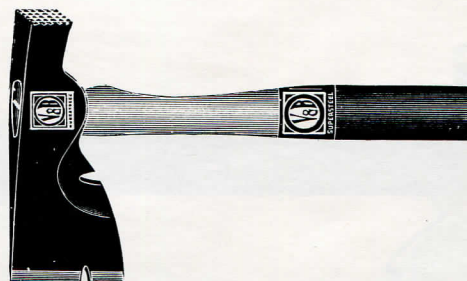


Barreling

Patent Leather Finish
Two-Tone Hickory Handles

No.	Width of bit, ins.	Wgt., ozs.	Wgt., lbs., per doz.	Each
1	2 3/8	12	14	\$1.85
2	2 1/2	14	15	1.85

Packed six in a box.



Produce

Patent Leather Finish
Two-Tone Hickory Handles

No.	Width of bit, ins.	Wgt., ozs.	Wgt., lbs., per doz.	Each
1	2 1/8	12	14	\$1.85

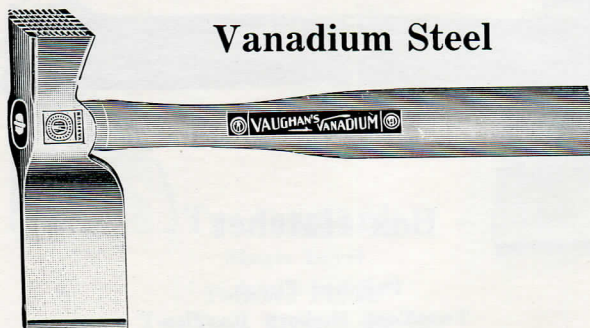
Packed six in a box.

Weight ounces does not include handles.

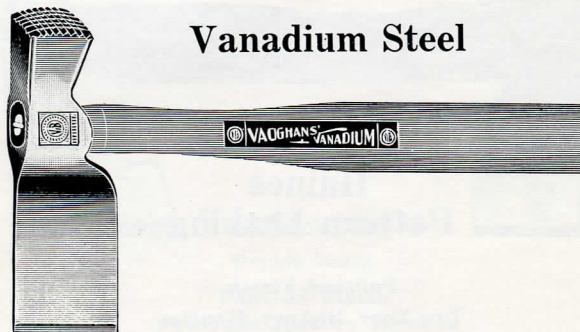
V & B Supersteel Hatchets

With Vaughan's Patented Expansion Wedge and Underwriters' Laboratories Label

PATENTED DEC. 6, 1921—OCT. 17, 1922



Vanadium Steel



Vanadium Steel

Underhill Pattern Lathing

Polished Finish—Hickory Handles

No.	Width of Bit	Weight, ozs.	Weight, lbs., per doz.	Each
8 Row	2 1/8	10	18	\$3.50
9 Row	2 1/8	11	18	3.50
10 Row	2 1/8	12	18	3.50

Packed six in a box.

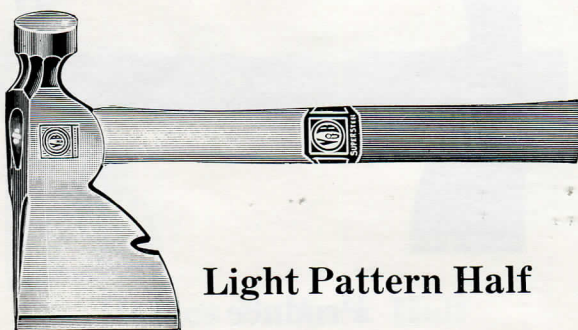
Underhill Pattern Lathing

(California Pattern)

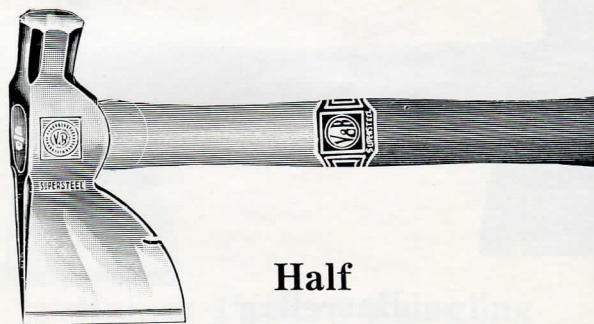
Polished Finish—Hickory Handles

No.	Width of Bit	Weight, ozs.	Weight, lbs., per doz.	Each
12 Row	2 1/8	11	18	\$3.50

Packed six in a box.



Light Pattern Half



Half

Thin Bit—Octagon Neck—Round Head

Polished Finish—Two-Tone Hickory Handles

No.	Width of bit, ins.	Wgt., ozs.	Wgt., lbs., per doz.	Each
62	3 1/2	22	23 1/2	\$3.00

Packed six in a box.

Polished Finish—Two-Tone Hickory Handles

No.	Width of bit, ins.	Wgt., ozs.	Wgt., lbs., per doz.	Each
201	3 1/4	15	18	\$2.50
202	3 5/8	22	24 1/2	2.50
203	4	27	28	2.75

Packed six in a box.

Weight ounces does not include handles.

V & B Supersteel Hatchets

The Supersteel Line with Full Polished Finish and Two-Tone Handles

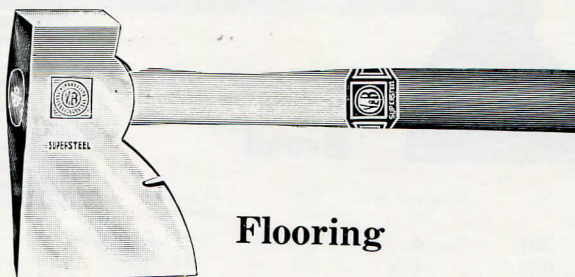


Broad

Polished Finish
Two-Tone Hickory Handle

No.	Width of bit, ins.	Wgt., ozs.	Wgt., lbs., per doz.	Each
201	4	24	22½	\$3.00
202	4½	28	34	3.00
203	5	36	39	3.50
204	5½	42	42	3.50

Packed six in a box.



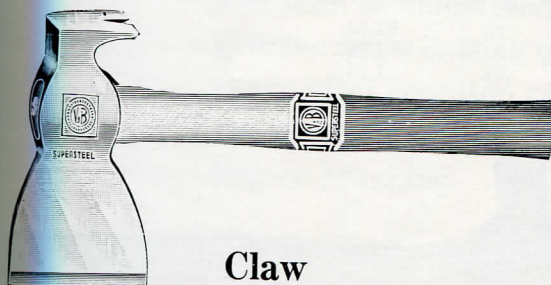
Flooring

Polished Finish

Two-Tone Hickory Handle

No.	Width of bit, ins.	Wgt., ozs.	Wgt., lbs., per doz.	Each
201	3½	20	24	\$3.00
202	4	24	29	3.00

Packed six in a box.



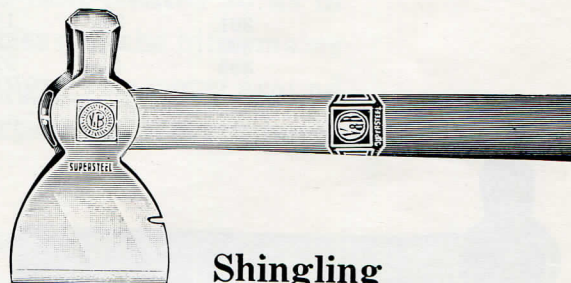
Claw

Polished Finish

Two-Tone Hickory Handle

No.	Width of bit, ins.	Wgt., ozs.	Wgt., lbs., per doz.	Each
201	3½	19	24	\$2.60
202	4	25	30	2.60

Packed six in a box.



Shingling

Polished Finish

Two-Tone Hickory Handle

No.	Width of bit, ins.	Wgt., ozs.	Wgt., lbs., per doz.	Each
201	3½	17	19½	\$2.50
202	4	23	25½	2.50

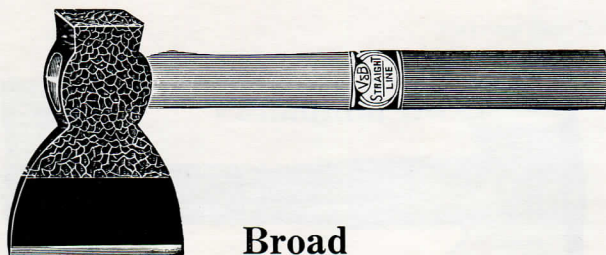
Packed six in a box.

Weight ounces does not include handles.

Straight Line Hatchets

Straight Line Hatchets are distinctively finished with our exclusive crystal finish making a very attractive line of tools. It is very durable, does not readily scratch or chip and is rust resisting.

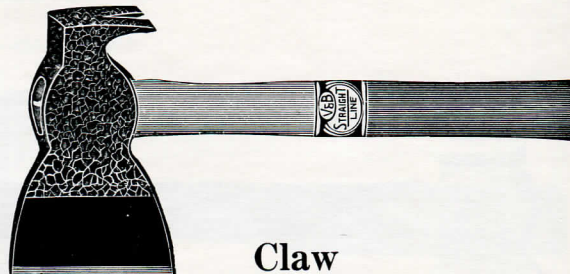
This line of Hatchets is equipped with our exclusive two-tone hickory handles.



Broad

No.	Width of bit, ins.	Wgt., ozs.	Wgt., lbs. per doz.	Each
301	4	24	22½	\$1.75
302	4½	28	34	1.75
303	5	36	39	2.25
304	5½	42	42	2.25

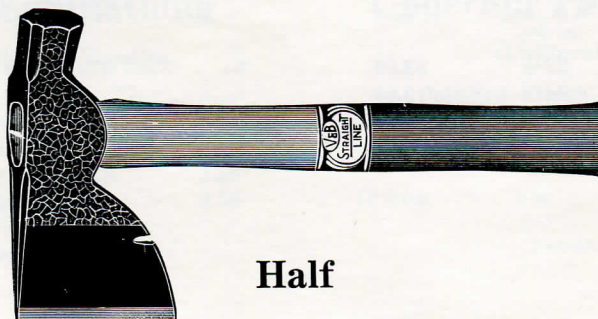
Packed six in a box.



Claw

No.	Width of bit, ins.	Wgt., ozs.	Wgt., lbs. per doz.	Each
301	3½	19	24	\$1.75
302	4	25	30	1.85

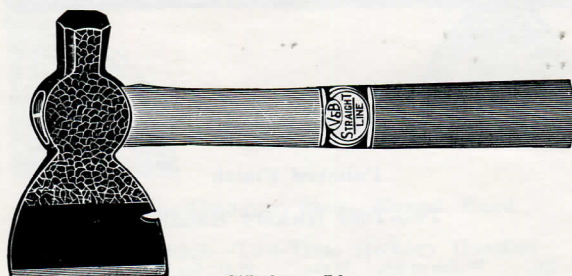
Packed six in a box.



Half

No.	Width of bit, ins.	Wgt., ozs.	Wgt., lbs. per doz.	Each
301	3¼	15	18	\$1.50
302	3⅝	22	24½	1.50
303	4	27	28	1.75

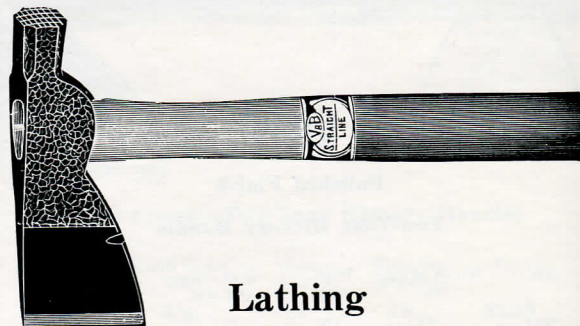
Packed six in a box.



Shingling

No.	Width of bit, ins.	Wgt., ozs.	Wgt., lbs. per doz.	Each
301	3½	17	19½	\$1.50
302	4	23	25½	1.50

Packed six in a box.



Lathing

No.	Width of bit, ins.	Wgt., ozs.	Wgt., lbs. per doz.	Each
301	2¼	14	13½	\$1.50
302	2½	17	18	1.50

Packed six in a box.

Weight ounces does not include handles.



V & B Supersteel Axes

V & B AXES are drop forged from solid supersteel. Our method of manufacture produces the finest possible tool. The steel is hammered and heat-treated so as to give the finest cutting qualities and the bit remains sharp after repeated grindings. The metal around the eye is of correct proportions to prevent buckling or breaking.

Handles are of high-grade hickory properly shaped for easy chopping and are attractively finished with our exclusive two-tone feature.

All V & B Axes are individually tested before leaving our factory.



V&B
Axes

V & B Men's Supersteel Axes

Patent Leather Finish—Two-Tone Hickory Handles



Michigan Pattern

Single Bit

Patent Leather Finish

Two-Tone Hickory Handle

Weight, lbs.	Length, Handle ins.	Wgt., lbs., per doz., Handled	Each Handled
3	36	52	\$2.75
3¼	36	55	2.75
3½	36	58	2.75
3¾	36	61	3.00
4	36	64	3.00
4¼	36	67	3.25
4½	36	70	3.25
4¾	36	73	3.50
5	36	76	3.50



Dayton Pattern

Single Bit

Patent Leather Finish

Two-Tone Hickory Handle

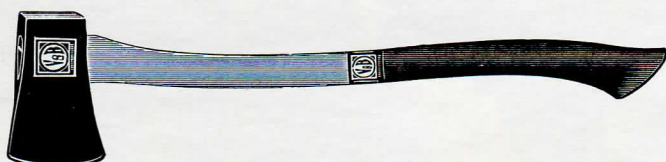
Weight, lbs.	Length, Handle ins.	Wgt., lbs., per doz., Handled	Each Handled
3	36	52	\$2.75
3¼	36	55	2.75
3½	36	58	2.75
3¾	36	61	3.00
4	36	64	3.00
4¼	36	67	3.25
4½	36	70	3.25
4¾	36	73	3.50
5	36	76	3.50

Packed twelve to the crate.

Weight pounds does not include handles.

V & B Supersteel Axes

Patent Leather Finish—Two-Tone Hickory Handles

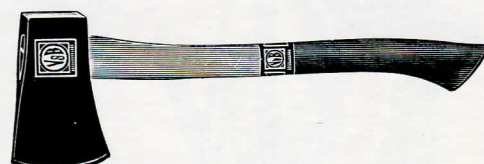


Boys' Axes

Patent Leather Finish
Two-Tone Hickory Handle

No.	Weight, lbs.	Length handle, inches	Wgt., lbs., per doz.	Each
2	2 1/4	28	48	\$2.00

Packed six in a box.

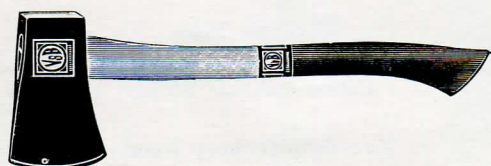


House Axes

Patent Leather Finish
Two-Tone Hickory Handle

No.	Weight, lbs.	Length handle, inches	Wgt., lbs., per doz.	Each
2	2 1/4	19	42	\$2.00

Packed six in a box.

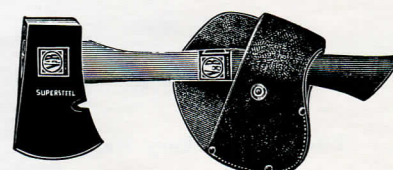


Hunters' Axes

Patent Leather Finish
Two-Tone Hickory Handle

No.	Weight, lbs.	Length handle, inches	Wgt., lbs., per doz.	Each
2	1 3/4	18	29	\$1.75

Packed six in a box.



Camp Axes

Scout Pattern
Patent Leather Finish—Beveled Nail Slot
Two-Tone Hickory Handle

No.	Weight, lbs.	Length handle, ins.	Weight, lbs., per doz.	Price with leather sheath	Price without leather sheath
0	1 1/4	14	24	\$2.00	\$1.75

Packed six in a box.

Weight pounds does not include handles.

V & B Straight Line Axes

Attractive Crystal Finish—Drop Forged and Tempered—Exceptional Value
Moderately Priced

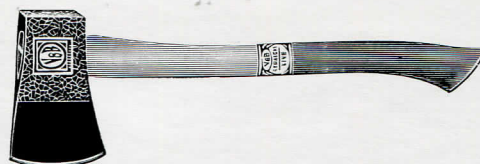


Boys' Axes

Crystal Finish
Two-Tone Hickory Handle

No.	Weight, lbs.	Length handle, ins.	Wgt., lbs., per doz.	Each
302	2 1/4	28	48	\$1.50

Packed six in a box.



House Axes

Crystal Finish
Two-Tone Hickory Handle

No.	Weight, lbs.	Length handle, ins.	Wgt., lbs., per doz.	Each
302	2 1/4	19	42	\$1.50

Packed six in a box.

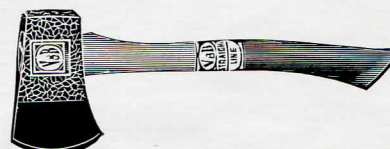


Hunters' Axes

Crystal Finish
Two-Tone Hickory Handle

No.	Weight, lbs.	Length handle, ins.	Wgt., lbs., per doz.	Each
302	1 3/4	18	29	\$1.75

Packed six in a box.



Camp Axes

Crystal Finish
Two-Tone Hickory Handle

No.	Weight, lbs.	Length handle, ins.	Wgt., lbs., per doz.	Each
300	1 1/4	14	24	\$1.25

Packed six in a box.

Weight pounds does not include handles.

Drop Forged Steel Planes



Unbreakable!



V & B Planes

V & B DROP FORGED STEEL PLANES—drop forged from a solid bar of V & B Supersteel—are the first unbreakable planes ever manufactured.

Drop forged from solid steel, rather than cast, they have the toughness to withstand a blow from a fall or other cause that would break a brittle cast plane.

Because they are drop forged and made from the most excellent materials, they will outlast many ordinary planes.

On V & B Drop Forged Planes the frog is designed so as to fit solidly on the frog base, and is held in perfect alignment by fitting securely in guides formed in the bottom of the plane. This design keeps the frog in perfect alignment with the throat and allows for more accurate adjustment.

The Cutters in the V & B Drop Forged Unbreakable Steel Planes are manufactured from one solid piece of Special Analysis Vanadium Steel. There is no soft section to a V & B Plane Blade, and this enables it to be sharpened back a greater distance and also insures greater rigidity and less chatter when securely clamped down. Each blade is tested to cut wire. V & B Blades keep their fine cutting edge longer.

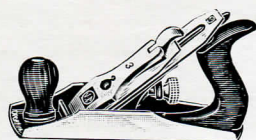
V & B Unbreakable Planes are finished distinctively and equipped with walnut handles and knobs. They are the latest development of a company that for over half a century have been the makers of fine tools.

V & B Drop Forged Unbreakable Steel Planes

Non-Rusting Nickel Finish

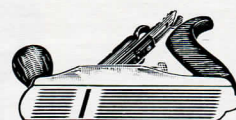
This is our full finished line and recommended for the best carpenter trade.

Smooth Bottoms

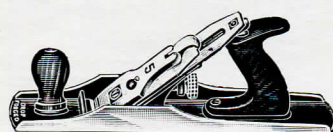


No.	Pattern	Length, ins.	Width of cutter	Wgt., each lbs.	Each
903	Smooth	8	1 3/4	3 1/8	\$4.80
904	Smooth	9	2	3 3/4	5.20
904 1/2	Smooth	10	2 3/8	4 3/4	5.80

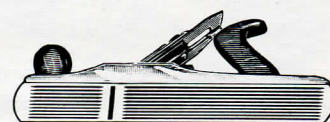
Corrugated Bottoms



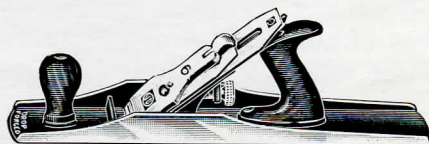
No.	Pattern	Length, ins.	Width of cutter	Wgt., each lbs.	Each
903C	Smooth	8	1 3/4	3 1/8	\$5.00
904C	Smooth	9	2	3 3/4	5.40
904 1/2 C	Smooth	10	2 3/8	4 3/4	6.10



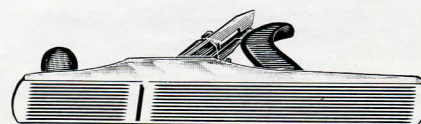
No.	Pattern	Length, ins.	Width of cutter	Wgt., each lbs.	Each
905	Jack	14	2	4 3/4	\$5.80



No.	Pattern	Length, ins.	Width of cutter	Wgt., each lbs.	Each
905C	Jack	14	2	4 3/4	\$6.10



No.	Pattern	Length, ins.	Width of cutter	Wgt., each lbs.	Each
906	Fore	18	2 3/8	7 3/4	\$7.50



No.	Pattern	Length, ins.	Width of cutter	Wgt., each lbs.	Each
906C	Fore	18	2 3/8	7 3/4	\$7.80

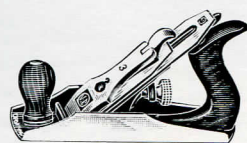
Packed one in a box.

V & B Drop Forged Unbreakable Steel Planes

Polished Bottom—White Nickered Blade, Cap and Clamp

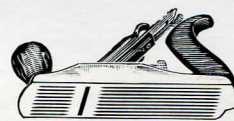
This line is similar to our 900 line but made to sell at a popular price to the general trade.

Smooth Bottoms



No.	Pattern	Length, ins.	Width of cutter	Wgt., each, lbs.	Each
703	Smooth	8	1 3/4	3 1/8	\$4.25
704	Smooth	9	2	3 3/4	4.65
704 1/2	Smooth	10	2 3/8	4 3/4	5.30

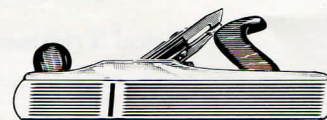
Corrugated Bottoms



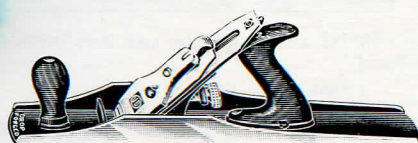
No.	Pattern	Length, ins.	Width of cutter	Wgt., each, lbs.	Each
703C	Smooth	8	1 3/4	3 1/8	\$4.45
704C	Smooth	9	2	3 3/4	4.85
704 1/2 C	Smooth	10	2 3/8	4 3/4	5.60



No.	Pattern	Length, ins.	Width of cutter	Wgt., each, lbs.	Each
705	Jack	14	2	4 3/4	\$5.30



No.	Pattern	Length, ins.	Width of cutter	Wgt., each, lbs.	Each
705C	Jack	14	2	4 3/4	\$5.60



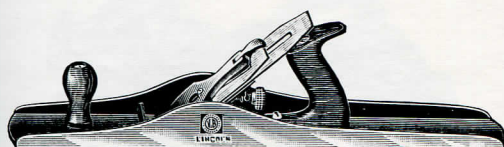
No.	Pattern	Length, ins.	Width of cutter	Wgt., each, lbs.	Each
706	Fore	18	2 3/8	7 3/4	\$6.80



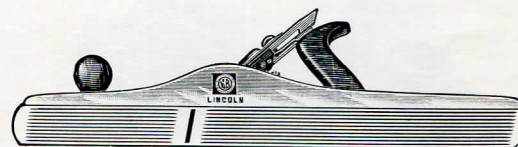
No.	Pattern	Length, ins.	Width of cutter	Wgt., each, lbs.	Each
706C	Fore	18	2 3/8	7 3/4	\$7.10

Lincoln Cast Planes

Polished Finish



No.	Pattern	Length, ins.	Width of cutter	Wgt., each, lbs.	Each
807	Jointer	22	2 3/8	8 1/8	\$7.80
808	Jointer	24	2 5/8	9 3/4	9.30



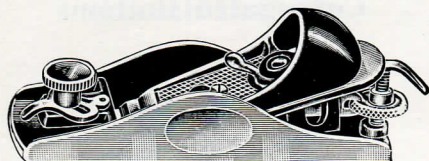
No.	Pattern	Length, ins.	Width of cutter	Wgt., each, lbs.	Each
807C	Jointer	22	2 3/8	8 1/8	\$8.20
808C	Jointer	24	2 5/8	9 3/4	9.75

Packed one in a box.

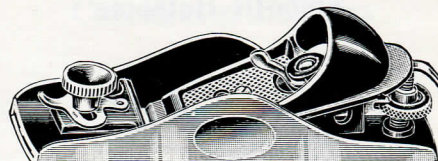
V & B Block Planes

Adjustable Throat

Japanned



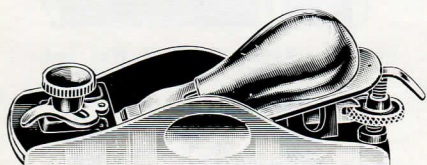
No.	Length, ins.	Width of cutter	Wgt., each, lbs.	Each
509 1/2	6	1 5/8	1 1/2	\$2.45



No.	Length, ins.	Width of cutter	Wgt., each, lbs.	Each
515	7	1 5/8	1 5/8	\$2.75

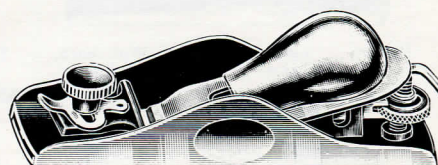
Adjustable Throat

Nickel Trimmed with Unbreakable Steel Knuckle Cap



The special shape of the cap comfortably fits the hand.

No.	Length, ins.	Width of cutter	Wgt., each, lbs.	Each
518	6	1 5/8	1 1/2	\$2.80



The special shape of the cap comfortably fits the hand.

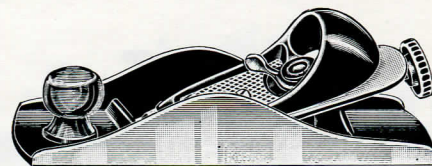
No.	Length, ins.	Width of cutter	Wgt., each, lbs.	Each
519	7	1 5/8	1 5/8	\$3.10

Adjustable Screw

Japanned



No.	Length, ins.	Width of cutter	Wgt., each, lbs.	Each
503	5 1/2	1 3/8	1 1/8	\$1.60



No.	Length, ins.	Width of cutter	Wgt., each, lbs.	Each
520	7	1 3/8	1 1/2	\$1.85

Packed one in a box.

V & B Block Planes

Low Angle Adjustable Throat

Japanned



No.	Length, ins.	Width of cutter	Wgt., each, lbs.	Each
560 1/2	6	1 3/8	1 1/4	\$2.60

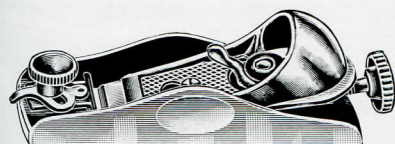


No.	Length, ins.	Width of cutter	Wgt., each, lbs.	Each
565 1/2	7	1 5/8	1 3/8	\$2.80

Low Angle Adjustable Throat

Nickel Trimmed

Unbreakable Steel Knuckle Cap



No.	Length, ins.	Width of cutter	Wgt., each, lbs.	Each
560	6	1 3/8	1 1/4	\$2.85



The special shape of the cap comfortably fits the hand.

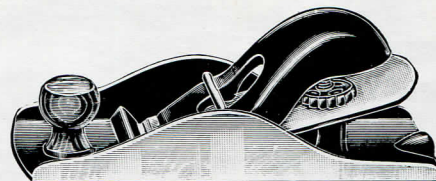
No.	Length, ins.	Width of cutter	Wgt., each, lbs.	Each
565	7	1 5/8	1 3/8	\$3.00

Non-Adjustable

Japanned



No.	Length, ins.	Width of cutter	Wgt., each, lbs.	Each
502	5 1/2	1 3/8	7/8	\$0.90



No.	Length, ins.	Width of cutter	Wgt., each, lbs.	Each
510	7	1 5/8	1 3/8	\$1.25

Packed one in a box.

V&B Braces



V & B Unbreakable Ratchet Braces

PATENTED JUNE 16, 1914

Improved Patented Key Construction

ALL PARTS drop forged or machine turned, no castings used—therefore V & B Braces are unbreakable and last longer. V & B Braces are simple in construction, made of few parts but of strong forgings, giving longer service.

Possibly the most frequent source of annoyance with other braces is the method of attaching the socket to the socket frame. This is generally done by means of an end screw. In operating when ratcheting, this screw is in constant friction with the socket frame and almost invariably causes trouble by working loose.

In all numbers of V & B Box Ratchet Braces, this construction is replaced by a patented key, which holds the socket firmly in place. This does not revolve, but has a double bearing in the socket frame and cannot work loose.

Another feature of V & B Braces is the jaws. These are drop forged from Supersteel. The milling is longitudinal, which gives a long gripping surface, and they will firmly hold all patterns of bits.

Hardware dealers and their clerks in selling, and mechanics in purchasing braces should keep in mind the two important facts, the Key Construction and Unbreakable features.

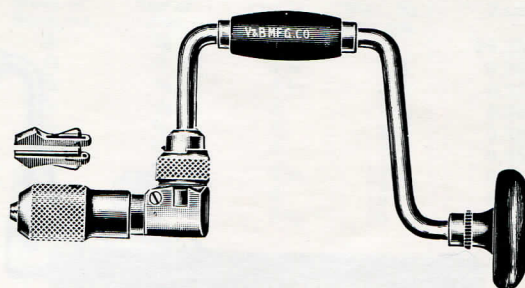


Number 444

Box Ratchet—Nickel Plated—Cocobolo Handles.
Ball-bearing Chuck—Ball-bearing Head.
Jaws will hold all patterns of bits up to and including $\frac{1}{2}$ inch.

No.	Sweep, ins.	Weight, lbs., per doz.	Each
444	8	34	\$6.50
	10	37	6.75
	12	40	7.00

Packed two in a box.



Number 222

Box Ratchet—Nickel Plated—Walnut Handles.
Ball-bearing Head.
Jaws will hold all patterns of bits up to and including $\frac{1}{2}$ inch.

This is our most popular Brace for high grade carpenter work.

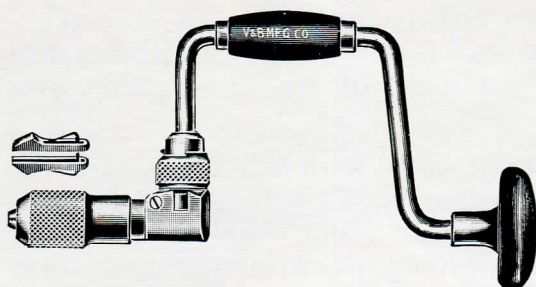
No.	Sweep, ins.	Weight, lbs., per doz.	Each
222	8	33	\$4.75
	10	36	5.00
	12	39	5.25
	14	42	5.50

Packed four in a box.

V & B Ratchet Braces

PATENTED JUNE 16, 1914

Improved Patented Key Construction



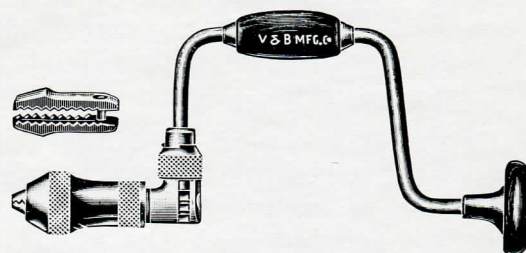
Number 11

Box Ratchet—Polished—Walnut Stain Handles. All metal parts either forgings or machine turned and unbreakable. It has our improved key constructed ratchet.

Jaws will hold all patterns of bits up to and including $\frac{1}{2}$ inch.

No.	Sweep, ins.	Weight, lbs., per doz.	Each
11	6	30	\$4.35
	8	32	4.35
	10	34	4.50
	12	36	4.65

Packed four in a box.



Number 66

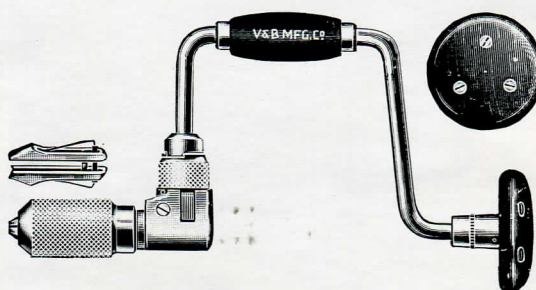
Open Ratchet

Alligator Jaws—Polished with Gilt Knurling.

This is our popular priced Brace for general use.

No.	Sweep, ins.	Weight, lbs., per doz.	Each
66	8	24	\$2.50
	10	27	2.60
	12	28½	2.70

Packed six in a box.



Number 333

Electricians' Special

Box Ratchet—Nickel Plated—Walnut Handles. Jaws will hold all patterns of bits up to and including $\frac{1}{2}$ inch.

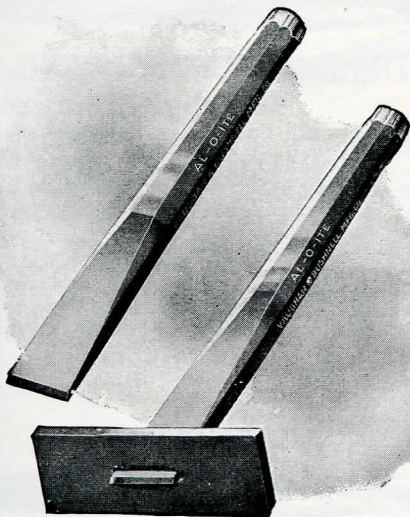
This Brace is designed especially for electricians and linemen. It is equipped with special jaws for holding large and heavy bits or drills. The head is securely attached by means of three extra heavy screws. Being an all steel brace with no castings it will withstand hard usage and is unbreakable. It has our improved key constructed ratchet.

No.	Sweep, ins.	Weight, lbs., per doz.	Each
333	10	34	\$5.50

Packed four in a box.

V & B Cold Chisels

All V & B Cold Chisels are individually tested. We are very careful in the manufacture of this line and will replace any Chisels that prove defective. Our Chisels are sold by the size of steel, but the cut runs one size larger in each case excepting No. 60.



No. 25

AL-O-ITE Cold Chisels

AL-O-ITE Cold Chisels are made of Extra Refined Alloy Steel.

Every AL-O-ITE Chisel is individually tempered and tested. We especially recommend this Chisel for hard work. AL-O-ITE Chisels are polished and Gun Metaled all over, making a very attractive tool.

Diam. of Steel, ins.	Size of Cut	Length, ins.	Wgt., lbs. per doz.	Each
1/4	1/8	5	1	\$0.35
5/16	3/8	5 1/4	1 1/2	0.35
3/8	7/8	5 1/2	2 1/4	0.35
1/2	1 1/2	6	3 1/2	0.40
5/8	5/8	6	4	0.40
3/4	7/8	7	7	0.50
7/8	1	7 1/2	11	0.70
1	1 1/8	8	15	0.85
1	1 1/8	8 1/2	20	1.00



No. 45

Extra Refined Steel. Regular Taper

No. 45. Extra Refined Octagon Steel. Polished and Gun Metaled Head and Taper. Natural Finish Body. This Chisel is the Standard Pattern, first quality.

Diam. of Steel, ins.	Size of Cut	Length, ins.	Wgt., lbs. per doz.	Each
1/4	1/8	5	1	\$0.30
5/16	3/8	5 1/4	1 1/2	0.30
3/8	7/8	5 1/2	2 1/4	0.30
1/2	1 1/2	6	3 1/2	0.35
5/8	5/8	6	4	0.35
3/4	7/8	7	6 1/2	0.45
7/8	1	7	7	0.45
1	1 1/8	12	14	0.55
1	1 1/8	7 1/2	11	0.55
1	1 1/8	12	18	0.75
1	1 1/8	8	15	0.75
1	1 1/8	12	19	0.85
1	1 1/8	8 1/2	20	0.85
1	1 1/8	12	28	1.00



No. 60

Octagon Steel—Straight Side Attractive Leather Finish

A special Chisel with cut same size as steel.

Diam. of Steel, ins.	Size of Cut	Length, ins.	Wgt., lbs. per doz.	Each
1/4	1/8	5	1	\$0.25
5/16	3/8	5 1/4	1 1/2	0.25
3/8	7/8	5 1/2	2 1/4	0.25
1/2	1 1/2	6	3 1/2	0.30
5/8	5/8	6	4	0.30
3/4	7/8	7	7	0.35
7/8	1	7 1/2	11	0.45
1	1	8	15	0.55
1	1	8 1/2	20	0.65



No. 40

Standard Grade—Regular Taper Octagon Steel—Natural Finish

Diam. of Steel, ins.	Size of Cut	Length, ins.	Wgt., lbs. per doz.	Each
1/4	1/8	5	1	\$0.15
5/16	3/8	5 1/4	1 1/2	0.15
3/8	7/8	5 1/2	2 1/4	0.15
1/2	1 1/2	6	3 1/2	0.20
5/8	5/8	6	4	0.20
3/4	7/8	7	7	0.25
7/8	1	7 1/2	11	0.35
1	1 1/8	8	15	0.40
1	1 1/8	8 1/2	20	0.45

All chisels packed as follows: 1/4 to 3/8. packed twelve in box, 7/16 and larger, six.

V & B Chisels

V & B Cape, Diamond Point and Round Nose Chisels are made of high grade steel and are individually tested. Any chisel that proves defective will be replaced.



Cape Chisels

Heavy Pattern

No. 50. Forged from Extra Refined Octagon Steel. Polished Points, Black Finish Body. When ordering specify size of Cutting Edge and Number of Chisel desired.

Cutting Edge	Diam. of Steel, inches	Length inches	Wgt., lbs. per doz.	Each
$\frac{1}{4}$	$\frac{5}{8}$	7	6	\$0.40
$\frac{5}{16}$	$\frac{5}{8}$	7	$6\frac{1}{4}$	0.40
$\frac{3}{8}$	$\frac{5}{8}$	7	$6\frac{1}{4}$	0.40
$\frac{1}{2}$	$\frac{3}{4}$	$7\frac{1}{2}$	$9\frac{1}{2}$	0.60
$\frac{5}{8}$	$\frac{3}{4}$	$7\frac{1}{2}$	$9\frac{1}{2}$	0.60
$\frac{3}{4}$	$\frac{7}{8}$	$7\frac{1}{2}$	$13\frac{3}{4}$	0.85

Packed six in a box.



Diamond Point Chisels

Heavy Pattern

No. 55. Forged from Extra Refined Octagon Steel. Polished Points, Black Finish Body. When ordering specify size of Point and Number of Chisel desired.

Point	Diam. of Steel, inches	Length inches	Wgt., lbs. per doz.	Each
$\frac{1}{4}$	$\frac{5}{8}$	$7\frac{1}{4}$	7	\$0.40
$\frac{5}{16}$	$\frac{5}{8}$	$7\frac{1}{4}$	7	0.40
$\frac{3}{8}$	$\frac{5}{8}$	$7\frac{1}{4}$	$7\frac{1}{4}$	0.40
$\frac{1}{2}$	$\frac{3}{4}$	$7\frac{1}{4}$	$10\frac{1}{2}$	0.60

Packed six in a box.



Cape Chisels

Light Pattern

No. 25. Forged from Extra Refined Octagon Steel. Polished Points, Black Finish Body. This Chisel is especially adapted for fine work upon dies, automobiles, etc. The steel is lighter than No. 50.

When ordering specify size of Cutting Edge and Number of Chisel desired.

Cutting Edge	Diam. of Steel, inches	Length inches	Wgt., lbs. per doz.	Each
$\frac{3}{16}$	$\frac{1}{4}$	5	1	\$0.35
$\frac{1}{4}$	$\frac{3}{8}$	$5\frac{1}{2}$	$2\frac{1}{4}$	0.40
$\frac{5}{16}$	$\frac{1}{2}$	6	4	0.45

Packed six in a box.



Diamond Point Chisels

Light Pattern

No. 30. Forged from Extra Refined Octagon Steel. Polished Points, Black Finish Body. This Chisel is especially adapted for fine work upon dies, automobiles, etc. The steel is lighter than No. 55.

When ordering specify size of Point and Number of Chisel desired.

Point	Diam. of Steel, inches	Length inches	Wgt., lbs. per doz.	Each
$\frac{3}{16}$	$\frac{5}{16}$	5	$1\frac{1}{2}$	\$0.35
$\frac{1}{4}$	$\frac{3}{8}$	$5\frac{1}{2}$	$2\frac{1}{4}$	0.40
$\frac{5}{16}$	$\frac{1}{2}$	6	4	0.45

Packed six in a box.



Round Nose Chisels

Light Pattern

No. 35. Forged from Extra Refined Octagon Steel. Polished Points, Black Finish Body. When ordering specify size of Point and Number of Chisel desired.

Point	Diam. of Steel, inches	Length inches	Wgt., lbs. per doz.	Each
$\frac{3}{16}$	$\frac{5}{16}$	5	$1\frac{1}{2}$	\$0.35
$\frac{1}{4}$	$\frac{3}{8}$	$5\frac{1}{2}$	$2\frac{1}{4}$	0.40
$\frac{5}{16}$	$\frac{1}{2}$	6	4	0.45

Packed six in a box.



Round Nose Chisels

Heavy Pattern

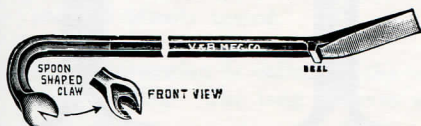
No. 65. Forged from Extra Refined Octagon Steel. Polished Points, Black Finish Body. When ordering specify size of Point and Number of Chisel desired.

Point	Diam. of Steel, inches	Length inches	Wgt., lbs. per doz.	Each
$\frac{1}{4}$	$\frac{5}{8}$	$6\frac{3}{4}$	$5\frac{1}{4}$	\$0.40
$\frac{5}{16}$	$\frac{5}{8}$	7	6	0.40
$\frac{3}{8}$	$\frac{5}{8}$	7	6	0.40
$\frac{1}{2}$	$\frac{3}{4}$	$7\frac{1}{4}$	$9\frac{1}{2}$	0.60

Packed six in a box.

V & B Wrecking Bars and Chisels

V & B Wrecking Bars are made with the same care as the balance of our line. Both ends are tempered individually and tested. They are neatly finished. Our Bars are full length. We do not include the curves in our measurements.



Red Bend Pattern

The Gooseneck end of these Wrecking Bars is painted red, the balance black. A very neat Bar. Special attention is called to the Spoon-shaped Claw designed for pulling spikes and to the Heel on the prying end. The back of the claw is curved to readily engage the spike.

No.	Length, ins.	Diam. of Oct. Steel, ins.	Wgt., lbs., per doz.	Each
324	24	$\frac{3}{4}$	42	\$1.00
330	30	$\frac{3}{4}$	51	1.25

Packed Loose.



Gooseneck Pattern

Painted Black

A new design recessed claw with longer and narrower slot for pulling nails. The back of claw is flat for ripping purposes.

No.	Length, ins.	Diam. of Oct. Steel, ins.	Wgt., lbs., per doz.	Each
24	24	$\frac{3}{4}$	42	\$0.75
30	30	$\frac{3}{4}$	51	0.90
36	36	$\frac{7}{8}$	81	1.25

Packed Loose.



Light Gooseneck Pattern

Painted Black

A substantial Bar at a popular price.

No.	Length, ins.	Diam. of Oct. Steel, ins.	Wgt., lbs., per doz.	Each
12	12	$\frac{1}{2}$	9	\$0.50
18	18	$\frac{5}{8}$	22	0.65

Packed Loose.



Concrete Chisels

(Bull Points)

Diamond Point—Octagon Steel

Size, Steel	Length, ins.	Wgt., lbs., per doz.	Each
$\frac{7}{8}$	12	23	\$1.25
1	12	30	1.50
1	18	42	1.75
$1\frac{1}{8}$	18	54	2.25
$1\frac{1}{8}$	24	75	2.50
$1\frac{1}{4}$	18	63	2.75
$1\frac{1}{4}$	24	90	3.00

Packed Loose.



Carpenters' Wrecking Chisel

Black Finish Body, 2-Inch Bit
Oil Tempered

No.	Length, ins.	Diam. of Oct. Steel, ins.	Wgt., lbs., per doz.	Each
14	18	$\frac{3}{4}$	20	\$1.00

Packed Loose.



Floor Chisel

Black Shank—Polished Blade

Our Floor Chisel has thin blade, enabling easy cutting of the tongue on matched flooring without marring the surface. Every carpenter, plumber and electrician should have this chisel in his kit.

Width of Cutting Edge	Diameter of Steel	Length, ins.	Each
2	$\frac{5}{8}$	10	\$1.00
$2\frac{1}{2}$	$\frac{5}{8}$	11	1.10
3	$\frac{5}{8}$	12	1.25
$3\frac{1}{2}$	$\frac{3}{4}$	15	1.50

Packed six in a box.

V & B Chisels



Plumbers' Chisel

Forged Steel, Polished Blade, Black Finish
Body, Oil Tempered

Cutting Edge	Diam. of Steel, ins.	Length over all, ins.	Wgt., lbs. per doz.	Each
$\frac{3}{4}$	$\frac{1}{2}$	10	6	\$0.75
1	$\frac{5}{8}$	11	10 $\frac{1}{2}$	1.00
1 $\frac{1}{4}$	$\frac{3}{4}$	11 $\frac{1}{2}$	15 $\frac{1}{2}$	1.25

Packed six in a box.



Long Brick Chisel

Forged Steel, Black Body
Oil Tempered

For digging through Brick Walls.

No.	Length, ins.	Diam. of Steel, ins.	Wgt., lbs., per doz.	Each
12	12	$\frac{1}{2}$	9	\$0.50
16	16	$\frac{5}{8}$	17	0.75
18	18	$\frac{3}{4}$	28 $\frac{1}{2}$	1.00

Packed six in a paper package.



Steel Wood Chisel

Beveled Edges

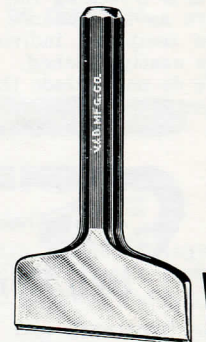
Easy to Operate in Heavy Wood, Forged Steel,
Black Finish, Oil Tempered

Width of Blade, ins.	Diam. of Steel, ins.	Length, ins.	Wgt., lbs., per doz.	Each
$\frac{5}{8}$	$\frac{1}{2}$	10	6	\$0.65
$\frac{3}{4}$	$\frac{1}{2}$	10	6 $\frac{1}{2}$	0.70
1	$\frac{5}{8}$	11	10 $\frac{1}{2}$	0.85
1 $\frac{1}{4}$	$\frac{3}{4}$	12	16	1.00
1 $\frac{1}{2}$	$\frac{3}{4}$	12	16 $\frac{1}{2}$	1.10

Packed six in a box.



Double Bevel



Single Bevel

Straight Shank

Bricklayers' Chisel Bricklayers' Set

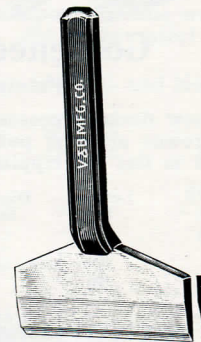
Forged Steel, Black Finish Body, Polished Fin-
ish Head and Blade, Oil Tempered

No.	Width of Blade, ins.	Diam. of Oct. Steel, ins.	Length over all, ins.	Wgt., lbs., per doz.	Each
13 $\frac{1}{2}$	3 $\frac{1}{2}$	$\frac{3}{4}$	7 $\frac{1}{2}$	12	\$0.90
14	4	$\frac{3}{4}$	7 $\frac{1}{2}$	13 $\frac{1}{2}$	0.95
14 $\frac{1}{2}$	4 $\frac{1}{2}$	$\frac{3}{4}$	7 $\frac{1}{2}$	15	1.00

Packed six in a box.



Double Bevel



Single Bevel

Offset Shank

Bricklayers' Chisel Bricklayers' Set

Forged Steel, Black Finish Body, Polished Fin-
ish Head and Blade, Oil Tempered

No.	Width of Blade, ins.	Diam. of Oct. Steel, ins.	Length over all, ins.	Wgt., lbs., per doz.	Each
3 $\frac{1}{2}$	3 $\frac{1}{2}$	$\frac{3}{4}$	6 $\frac{3}{4}$	12	\$0.90
4	4	$\frac{3}{4}$	7	13 $\frac{1}{2}$	0.95
4 $\frac{1}{2}$	4 $\frac{1}{2}$	$\frac{3}{4}$	7 $\frac{1}{4}$	15	1.00

Packed six in a box.

V & B Star Drills

IT PAYS TO BUY A GOOD STAR DRILL

Star Drills receive severe usage and must be made right in order to give satisfactory service. V & B Star Drills are made of Octagon Tool Steel. They are individually tempered and individually tested.

Special attention is called to the countersink shaped Point which centers the drill and facilitates cutting. The long grooves allow clearance for the brick and cement.

V & B Star Drills will not bend. The four sides of the cutters are ground true.



Cutters Filed



Showing Countersunk Point and Long Grooves

Forged Steel—Oil Tempered—Black Enameled Body

Order by Face and Lengths.

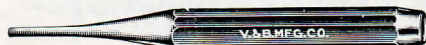
Lengths 12, 18 and 24 inches. 12-inch made in sizes $\frac{1}{4}$ to $1\frac{1}{2}$ inches. 18-inch made in sizes $\frac{3}{8}$ to $1\frac{1}{2}$ inches. 24-inch made in sizes $\frac{1}{2}$ to $1\frac{1}{2}$ inches.

Diam. of face	Wgt., lbs., per doz., 12"	Wgt., lbs., per doz., 18"	Wgt., lbs., per doz., 24"	Each 12"	Each 18"	Each 24"
$\frac{1}{4}$	2 $\frac{1}{4}$			\$0.35		
$\frac{5}{16}$	3 $\frac{1}{4}$			0.35		
$\frac{3}{8}$	3 $\frac{1}{4}$	4 $\frac{3}{4}$		0.35	\$0.50	
$\frac{7}{16}$	4 $\frac{1}{4}$	6 $\frac{3}{4}$		0.45	0.55	
$\frac{1}{2}$	4 $\frac{1}{2}$	7	9 $\frac{1}{2}$	0.50	0.60	\$0.75
$\frac{5}{8}$	8	12	17	0.60	0.75	0.90
$\frac{3}{4}$	12	19	25	0.75	0.90	1.05
$\frac{7}{8}$	17	27	38	0.85	1.00	1.25
1	22	36	49	0.90	1.15	1.50
1 $\frac{1}{8}$	23	37	52	1.10	1.35	1.75
1 $\frac{1}{4}$	24	38	53	1.30	1.60	2.00
1 $\frac{1}{2}$	26	52	66	1.60	2.00	2.50

12 and 18-inch sizes $\frac{1}{4}$ to $\frac{3}{4}$ packed twelve in a box. 12 and 18-inch sizes $\frac{7}{8}$ to $1\frac{1}{2}$ packed six in a box. 24-inch, all sizes, packed one-half dozen in a package.

V & B Machine Punches

V & B Machine Punches are made in Special Taper, and Regular Taper Designs



Extra Quality Special Taper

Extra Refined Steel, Polished and Gun Metaled Taper and Head, Natural Finish Body

Made with Special Taper to allow clearance.

No.	Diam. of Point, ins.	Diam. of Steel, ins.	Length ins.	Wgt., lbs., per doz.	Each
11	$\frac{8}{32}$	$\frac{1}{2}$	6	2 $\frac{1}{4}$	\$0.30
12	$\frac{7}{32}$	$\frac{1}{2}$	6	2 $\frac{1}{4}$	0.30
13	$\frac{6}{32}$	$\frac{1}{2}$	6	2 $\frac{1}{4}$	0.30
14	$\frac{5}{32}$	$\frac{3}{8}$	6	2 $\frac{1}{4}$	0.30
15	$\frac{4}{32}$	$\frac{3}{8}$	6	2 $\frac{1}{4}$	0.30
16	$\frac{3}{32}$	$\frac{3}{8}$	6	2 $\frac{1}{4}$	0.30
80	$\frac{3}{16}$	$\frac{1}{2}$	8	4 $\frac{1}{2}$	0.40
90	$\frac{7}{32}$	$\frac{5}{8}$	9	7 $\frac{1}{2}$	0.50
100	$\frac{1}{4}$	$\frac{3}{4}$	10	12	0.65

Packed six in a box.

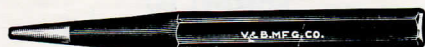


3-Inch Regular Taper

Polished Head and Taper
Black Finish Body

No.	Diam. of Point, ins.	Diam. of Steel, ins.	Length ins.	Wgt., lbs., per doz.	Each
41	$\frac{8}{32}$	$\frac{1}{2}$	6	3 $\frac{3}{4}$	\$0.30
42	$\frac{7}{32}$	$\frac{1}{2}$	6	3 $\frac{3}{4}$	0.30
43	$\frac{6}{32}$	$\frac{1}{2}$	6	3 $\frac{3}{4}$	0.30
44	$\frac{5}{32}$	$\frac{1}{2}$	6	3 $\frac{3}{4}$	0.30
45	$\frac{4}{32}$	$\frac{1}{2}$	6	3 $\frac{3}{4}$	0.30
46	$\frac{3}{32}$	$\frac{1}{2}$	6	3 $\frac{3}{4}$	0.30
8	$\frac{5}{32}$	$\frac{1}{2}$	8	4 $\frac{1}{2}$	0.35
9	$\frac{3}{16}$	$\frac{5}{8}$	9	7 $\frac{1}{2}$	0.40
10	$\frac{1}{4}$	$\frac{3}{4}$	10	12	0.50

Packed six in a box.

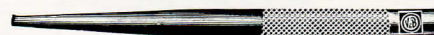


3-Inch Regular Taper

Black Finish

No.	Diam. of Point, ins.	Diam. of Steel, ins.	Length ins.	Wgt., lbs., per doz.	Each
1	$\frac{8}{32}$	$\frac{1}{2}$	6	3 $\frac{3}{4}$	\$0.20
2	$\frac{7}{32}$	$\frac{1}{2}$	6	3 $\frac{3}{4}$	0.20
3	$\frac{6}{32}$	$\frac{1}{2}$	6	3 $\frac{3}{4}$	0.20
4	$\frac{5}{32}$	$\frac{1}{2}$	6	3 $\frac{3}{4}$	0.20
5	$\frac{4}{32}$	$\frac{1}{2}$	6	3 $\frac{3}{4}$	0.20
6	$\frac{3}{32}$	$\frac{1}{2}$	6	3 $\frac{3}{4}$	0.20

Packed six in a box.



Lining Up Punch

Tapered Pattern

No.	Diam. of Point, ins.	Diam. of Steel, ins.	Length ins.	Wgt., lbs., per doz.	Each
70	$\frac{3}{16}$	$\frac{1}{2}$	9	4 $\frac{1}{8}$	\$0.60

Packed six in a box.



Prick Punches

Extra Quality—Knurled Pattern

No.	Diam. of Steel, ins.	Length, ins.	Wgt., lbs., per doz.	Each
50	$\frac{3}{8}$	4	1 $\frac{1}{8}$	\$0.25
145	$\frac{1}{2}$	6	3	0.35
45	$\frac{3}{4}$ Oct.	7	7 $\frac{7}{8}$	0.65

No. 45 is a special automobile body punch.

Packed twelve in a box.



Center Punches

Extra Quality—Knurled Pattern

No.	Diam. of Steel, ins.	Length, ins.	Wgt., lbs., per doz.	Each
50	$\frac{3}{8}$	4	1 $\frac{1}{8}$	\$0.25
145	$\frac{1}{2}$	6	3	0.35

Packed twelve in a box.

V & B Punches and Sets

Knurled Belt Punches



Polished Pipe and Head

All Knurled Punches are reamed out so that the wads will not stick. The Pipe is turned down smaller at the end and will release itself from any belting. This is the best designed Belt Punch on the market.

No.	Size Hole	Length, ins.	Diam. of Steel, ins.	Wgt., lbs., per doz.	Each
101	$\frac{3}{32}$	$3\frac{7}{8}$	$\frac{1}{16}$	$1\frac{1}{8}$	\$0.40
102	$\frac{7}{64}$	$3\frac{7}{8}$	$\frac{1}{16}$	$1\frac{1}{8}$	0.40
103	$\frac{1}{8}$	$3\frac{7}{8}$	$\frac{1}{16}$	$1\frac{1}{8}$	0.40
104	$\frac{9}{64}$	$3\frac{7}{8}$	$\frac{3}{8}$	$1\frac{1}{2}$	0.45
105	$\frac{5}{32}$	$3\frac{7}{8}$	$\frac{3}{8}$	$1\frac{1}{2}$	0.45
106	$\frac{11}{64}$	$4\frac{1}{8}$	$\frac{1}{16}$	$2\frac{1}{4}$	0.50
107	$\frac{13}{64}$	$4\frac{1}{8}$	$\frac{1}{16}$	$2\frac{1}{4}$	0.50
108	$\frac{7}{32}$	$4\frac{1}{8}$	$\frac{1}{2}$	3	0.60
109	$\frac{1}{4}$	$4\frac{1}{8}$	$\frac{1}{2}$	3	0.60
110	$\frac{9}{32}$	$4\frac{3}{8}$	$\frac{1}{16}$	4	0.70
111	$\frac{5}{16}$	$4\frac{3}{8}$	$\frac{1}{16}$	4	0.70
112	$\frac{11}{32}$	$4\frac{3}{8}$	$\frac{1}{16}$	4	0.70
113	$\frac{3}{8}$	$4\frac{3}{8}$	$\frac{5}{8}$	5	0.85
114	$\frac{13}{32}$	$4\frac{3}{8}$	$\frac{5}{8}$	5	0.85
116	$\frac{1}{2}$	5	$\frac{3}{4}$	6	1.00

Packed twelve in a box.

Flat Head Nail Sets



Owing to the Flat Head Design, these Nail Sets will not readily roll on uneven surfaces. The design allows for better guidance on account of the long, flat surface resting on the first finger of the left hand. All have Cup Points and are individually tested. Knurled, polished and blued.



Points $\frac{1}{32}$, $\frac{2}{32}$, $\frac{3}{32}$, $\frac{4}{32}$, $\frac{5}{32}$ inches.

No.	Diam. of Steel, ins.	Length, ins.	Wgt., ozs., per doz.	Each
100	$\frac{3}{8}$	4	16	\$0.20

Packed two dozen assorted in Display Box as illustrated. Assortment is as follows: 4 each $\frac{1}{32}$ and $\frac{4}{32}$. 8 each $\frac{2}{32}$ and $\frac{3}{32}$.

Also packed two dozen of any one size in Display Box if specified.

Rivet Sets



Farmers' Pattern

No.	For Copper Rivets	Length, ins.	Wgt., lbs., per doz.	Each
7	7	5	5	\$0.30
8	8	5	5	0.30
9	9	5	5	0.30
10	10 & 11	5	5	0.30

Packed six in a box.



Tinners' Pattern

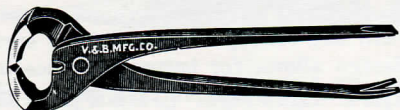
No.	For Iron Rivets, lbs.	For Copper Rivets, Nos.	Length, ins.	Wgt., lbs., per doz.	Each
00	14		$5\frac{1}{2}$	$10\frac{1}{2}$	\$0.85
0	12 & 10	5	$5\frac{1}{2}$	$10\frac{1}{2}$	0.85
1	8	6	5	7	0.75
2	6	7	5	7	0.75
3	5 & 4	8	$4\frac{1}{2}$	5	0.65
4	3 & $2\frac{1}{2}$	9	$4\frac{1}{2}$	5	0.65
5	2 & $1\frac{3}{4}$	10 & 11	$4\frac{1}{4}$	$3\frac{1}{2}$	0.50
6	$1\frac{1}{2}$	12	$4\frac{1}{4}$	$3\frac{1}{2}$	0.50
7	$1\frac{1}{4}$	13	$4\frac{1}{4}$	3	0.40
8	12 & 10 ozs.	14	$4\frac{1}{4}$	3	0.40

Packed six in a box.

V & B Pincers and Nippers

Extra Refined Steel—Drop Forged—Tempered and Tested

On all Pincers and Nippers with black painted handles, the scale is thoroughly removed, leaving a smooth surface to which the paint is applied. There is nothing better in quality or finish. All have filed jaws.



Carpenters' Pincers

With Wire Cutter

Nos. 6 to 12 Series have wire cutter, flat handles, claw and screw driver. Polished jaws, ebony finished handles.

No.	Length, ins.	Wgt., lbs., per doz.	Each
6	6	5 1/2	\$0.65
7	7	8	0.75
8	8	10	0.80
10	10	15	1.00
12	12	18	1.20

Packed six in a box.



Farriers' Pincers

Polished Jaws
Black Painted Handles

No.	Length, ins.	Wgt., lbs., per doz.	Each
13	13	31 1/2	\$2.00
14	14	32 1/2	2.25

Packed six in a box.



Carpenters' Pincers

Without Cutter

Nos. 206 to 212 have polished jaws and natural finish handles. Claw and screw driver handles.

No.	Length, ins.	Wgt., lbs., per doz.	Each
206	6	5	\$0.55
207	7	7 1/2	0.65
208	8	9 1/2	0.70
210	10	14	0.90
212	12	17	1.00

Packed six in a box.



Farriers' Nail Cutting Nippers

Full Polished

No.	Length, ins.	Wgt., lbs., per doz.	Each
20	12	26	\$2.50
22	14	28 1/2	3.00

Packed six in a box.



Blacksmiths' Pincers

Polished Jaws
Black Painted Handles

No.	Length, ins.	Wgt., lbs., per doz.	Each
10	10	17	\$1.00
12	12	21	1.10
14	14	24	1.25

Packed six in a box.



Nail Cutting Nippers

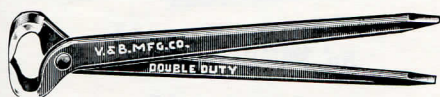
Polished Jaws
Black Painted Handles

No.	Length, ins.	Wgt., lbs., per doz.	Each
30	12	21	\$1.35
32	14	23 1/2	1.50

Packed six in a box.

Cutting Nippers, Hoof Parers and Staple Pullers

Extra Refined Steel—Drop Forged—Tempered and Tested.



Double Duty Cutting Nipper

Polished Jaws
Black Painted Handles

The jaws on this nipper are so designed that the maximum amount of leverage is obtained.

No.	Length, ins.	Wgt., lbs., per doz.	Each
64	14	24	\$1.75

Packed six in a box.



Staple Puller

Polished Jaws
Ebony Finished Handles

This tool has a longitudinal groove in the top which allows clearance for wire when pulling staples.

No.	Length, ins.	Wgt., lbs., per doz.	Each
200	10½	24	\$2.00

Packed four in a box



Hoof Parers

Polished Jaws
Black Painted Handles, Lap Joint

No.	Length, ins.	Wgt., lbs., per doz.	Each
212	12	23	\$2.00
214	14	25	2.50

Packed six in a box.



Hoof Parers

Full Polished
Counterbored Joint

No.	Length, ins.	Wgt., lbs., per doz.	Each
220	12	25	\$2.50
222	14	26	3.00

Packed six in a box.

V & B Bits

Extra Refined Steel—Drop Forged—Oil Tempered

Special attention is called to our Numbers 30 and 1 Screw Driver Bits. The Number 30 is heavy and is made in assorted sizes. The Number 1 is a good pattern at a popular price.

Our Reamers have a round shank next to the Taper, which is the most approved pattern. The four sides of the Number 80 Reamer are hollow ground, thereby giving clearance to the cutting edges. Both are polished finish.

Screw Driver



No. 30. Designed for Heavy Work.

Bits $\frac{1}{4}$, $\frac{5}{16}$, $\frac{3}{8}$, $\frac{1}{2}$ inch wide.

No.	Length over all, ins.	Wgt., lbs., per doz.	Each
30	4½ to 5	1½	\$0.50

Packed twelve assorted in a box. One size furnished also if desired.

Reamer Bits



No. 80. Square Pattern

No.	Reams holes up to, ins.	Length over all, ins.	Wgt., lbs., per doz.	Each
80	$\frac{5}{8}$	6	2	\$0.85

Packed six in a box.



No. 1, Bits $\frac{1}{4}$, $\frac{5}{16}$, $\frac{3}{8}$ inch wide.

No.	Length over all, ins.	Wgt., lbs., per doz.	Each
1	4½	1½	\$0.25

Packed twelve assorted in a box. One size furnished also if desired.



No. 100. Octagon Pattern.

No.	Reams holes up to, ins.	Length over all, ins.	Wgt., lbs., per doz.	Each
100	$\frac{9}{16}$	6	2	\$0.85

Packed six in a box.

Countersink Bits



No. 14. Rose Pattern. Designed for use on Brass.

No.	Countersinks holes up to, ins.	Length over all, ins.	Wgt., lbs., per doz.	Each
14	$\frac{3}{4}$	4½	1½	\$0.50

Packed six in a box.



No. 13. Flat Pattern.

Designed for use on Iron.

No.	Countersinks holes up to, ins.	Length over all, ins.	Wgt., lbs., per doz.	Each
13	$\frac{3}{4}$	4½	1½	\$0.40

Packed six in a box.



No. 15. Snail Pattern. Designed for use on Wood.

No.	Countersinks holes up to, ins.	Length over all, ins.	Wgt., lbs., per doz.	Each
15	$\frac{3}{4}$	4½	1½	\$0.50

Packed six in a box.

V & B Scrapers



Hog Scraper

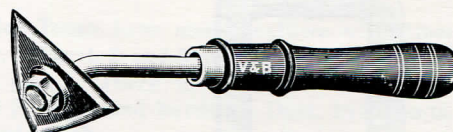
Edges Ground

Natural Finish Blades

No. 6 Scraper is used by all the large packing houses. The Blade is secured by bolt through handle. Walnut Finish Hardwood Handles.

No.	Sheet gauge	Steel Diam. of Blade, ins.	Diam. of handle, ins.	Lgth. over all, ins.	Wgt., lbs. per doz.	Each
6	18	4½	5½	6¾	7	\$0.50

Packed six in a box.



Box Scraper

No. 6 Box. Triangular Blade of Extra Warranted Steel with Polished Finish Bevels. Heavy Steel Ferrule. Shank extends half way through handle and is secured by rivet passing through handle and shank. Blade is held in place by nut screwed on end of shank. Walnut Finish Hardwood Handles.

No.	Width of Cut. edge, ins.	Lgth. of Handle, ins.	Lgth. over all, ins.	Wgt., lbs. per doz.	Each
6	2¾	7½	12	8½	\$1.25

Extra Blades, Each \$0.50

Packed six in a box.



Hog Scraper

Walnut Finish Hardwood Handles

No. 8 Scraper is designed for farmers' use.

No.	Sheet gauge	Steel Diam. of Blade, ins.	Diam. of handle, ins.	Lgth. over all, ins.	Wgt., lbs. per doz.	Each
8	20	4	5½	6½	5½	\$0.30

Packed six in a box.



Ship Scraper

No. 8 Ship. Triangular Blade of Extra Warranted Steel with Polished Finish Bevels. Malleable Iron Ferrule. Blade is held in place by heavy machine bolt screwed into top of Ferrule. Walnut Stained Hickory Handle.

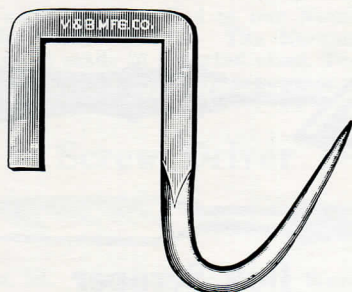
No.	Width of Cut. edge, ins.	Lgth. of Handle, ins.	Lgth. over all, ins.	Wgt., lbs. per doz.	Each
8	5	13½	17	19	\$1.75

Extra Blades, Each \$0.60

Packed twelve blades in a box; handles loose.

V & B Butchers' Goods

Our Meat Hooks are forged from Solid Steel. The points are hand forged.
They are heavily tinned.



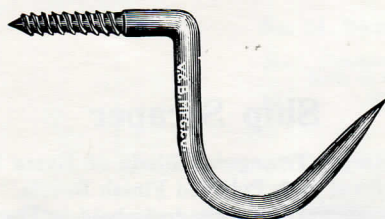
Bar Hook

Solid Steel, Forged Points
Tinned Finish

NOTE—Hooks to fit 2-inch Bar will be furnished unless otherwise specified.

No.	To fit Bar, ins.	Length ins.	Hook Projects, ins.	Wgt., lbs., per doz.	Each
24	1 1/2	4	2 1/2	2 1/2	\$0.15
	1	4	2 1/2	2 3/4	0.15
	1 1/2	4	2 1/2	3	0.15
	1 3/4	4	2 1/2	3 1/8	0.15
28	2	4	2 1/2	3 1/4	0.15
	2	5	3 1/4	9 1/2	0.30
22	1 1/2	4 3/4	2 3/4	5 3/4	0.25
	1 3/4	4 3/4	2 3/4	6 5/8	0.25
	2	4 3/4	2 3/4	6 3/4	0.25
	1 3/4	4	2 1/2	4 3/8	0.20
26	2	4	2 1/2	4 3/8	0.20
	3/8	2 1/4	1 1/2	1	0.10
30	1 1/4	3	2	1 1/2	0.15

Nos. 22, 24, 26 and 28 packed twelve in a box.
Nos. 30 and 25 packed 3 dozen in a box.

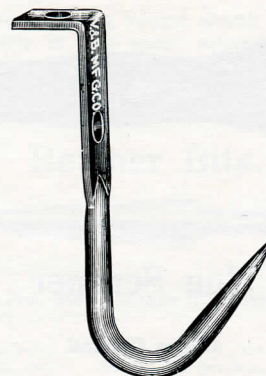


Screw Meat Hook

Forged Points, Tinned Finish, Gimlet
Pointed Threads

No.	Diam. of Steel, ins.	Length of Thread, ins.	Length of drop, over all	Hook Projects	Wgt., lbs. per gross	Each
2	1/4	1 5/8	2 1/4	2	10	\$0.08
3	5/16	1 7/8	2 1/2	2 1/2	15 3/4	0.10

Packed one-half gross in a box.



Quarter Hook

Solid Steel, Forged Points
Tinned Finish

To Screw On

No.	Diam. of Steel, ins.	Length ins.	Width of Plate, ins.	Diam. of Screw Holes	Hook Projects	Wgt. lbs., per gross	Each
40	1/4	3 1/2	1/2	3/32	1 5/8	10	\$0.10

Packed one-half gross in a box.



Butchers' Block Pin

Tinned Finish

No.	Length over all, ins.	Diam. of Steel, ins.	Wgt., lbs., per doz.	Each
5	14	3/8	5 3/4	\$0.50

Packed six in a paper package.



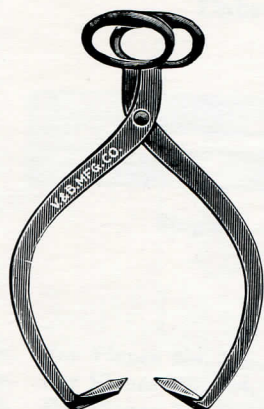
Butchers' S Hook

Solid Steel, Forged Points
Tinned Finish

No.	Length over all, ins.	Hook Project, ins.	Diam. of Steel, ins.	Wgt., lbs., per doz.	Each
4	4	1 1/4	1/4	1 1/8	\$0.10
6	6	2 1/4	5/16	2 1/2	0.15
8	8	2 3/4	3/8	4 1/2	0.20

Nos. 4 and 6 packed three dozen in a box.
No. 8 packed one dozen in a box.

V & B Ice Tongs



Ice Tongs

Our Ice Tongs have many features of distinct merit. Nos. 1, 2 and 3 are Drop Forged in one solid piece. There is no weld. They have Swell Handles and hardened Duck Bill Points. Painted red.

No.	Size	Span, ins.	Wgt., lbs., per doz.	Each
1	Family	15	45	\$2.00
2	Retailers	17	51	2.25
3	Loading	24	70	2.50

Packed Loose.



Jack Frost

No. 6 is the popular Family Size, made of wrought steel. This Tong has Duck Bill Points and Non-binding Chain Handle. Painted black. A serviceable Tong at a popular price.

No.	Span, ins.	Wgt., lbs., per doz.	Each
6	15	30	\$1.25

Packed Loose.



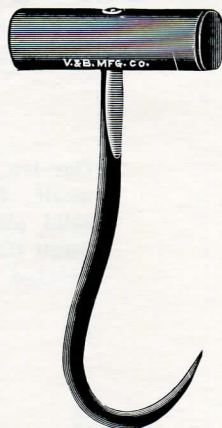
Eskimo

No. 7 is a very serviceable Tong and is especially adapted for use about the household, in restaurants, delicatessen stores, milk depots.

No.	Span, ins.	Wgt., lbs., per doz.	Each
7	15	30	\$1.00

Packed Loose.

V & B Hooks

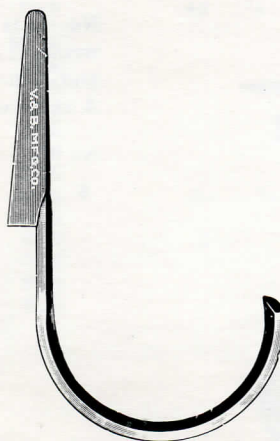


Hay or Box Hook

Oval Hardwood Handle—Round Steel

No.	Diam. of Steel, ins.	Length, under Handle, ins.	Length of Handle, ins.	Weight, lbs., per doz.	Each
1	$\frac{7}{16}$	8	$5\frac{1}{4}$	$7\frac{3}{4}$	\$0.40

Packed Loose



Conductor Pipe Hook

Solid Steel—Drop Forged—Tinned Finish

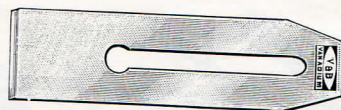
Our Conductor Hooks are forged in one piece, without weld. They are extra strong and properly proportioned.

No.	For Conductor Pipe, ins.	Length of Tong, ins.	Length over all, ins.	Weight, per 100 lbs.	Each
3	3	3	6	22	\$0.20
4	4	4	8	$42\frac{1}{2}$	0.25
5	5	4	9	45	0.30
6	6	4	10	46	0.35

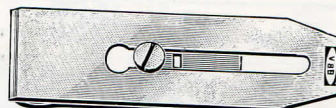
Packed Loose

Price List of Plane Cutters

Special Analysis Vanadium All Steel Blade For Drop Forged
Unbreakable Steel Planes, 900 Series



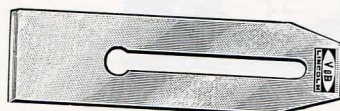
Single



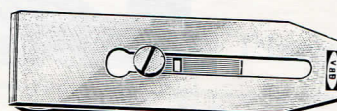
Double

Size		Plane Blades, Single, Each	Plane Blades, Double, Each	Plane Blade Caps, Each
1 3/4 In.	For Planes No. 903, 903C.....	\$0.65	\$1.00	\$0.35
2 In.	For Planes No. 904, 904C, 905, 905C.....	0.70	1.05	0.35
2 3/8 In.	For Planes No. 904 1/2, 904 1/2 C, 906, 906C.....	0.85	1.30	0.45

Supersteel Blades for 700 and 800 Series Planes



Single



Double

Size		Plane Blades, Single, Each	Plane Blades, Double, Each	Plane Blade Caps, Each
1 3/4 In.	For Planes No. 703, 703C	\$0.55	\$0.90	\$0.35
2 In.	For Planes No. 704, 704C, 705, 705C	0.60	0.95	0.35
2 3/8 In.	For Planes No. 704 1/2, 704 1/2 C, 706, 706C, 807, 807C	0.75	1.20	0.45
2 5/8 In.	For Planes No. 808, 808C	0.80	1.30	0.50

All Steel Blades for V & B Block Planes



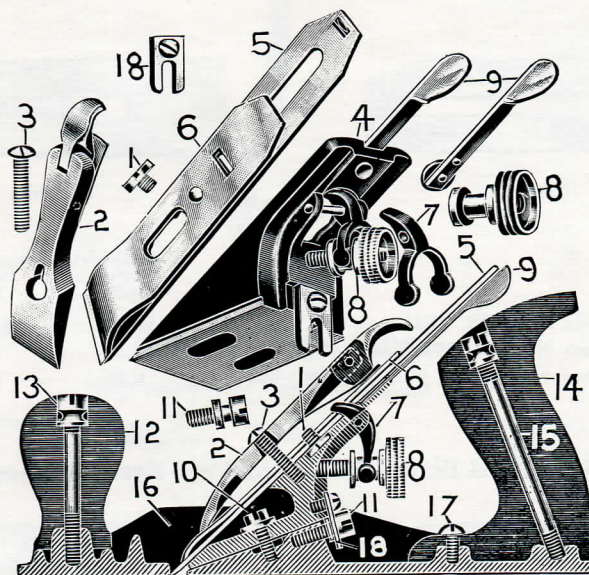
Adjustable



Non-Adjustable

Size		Plane Blades Per Doz.
1 3/8 In.	Non-adjustable. For Plane No. 502.....	\$2.50
1 5/8 In.	Non-adjustable. For Plane No. 510.....	3.80
1 3/8 In.	Adjustable. For Planes No. 503, 560, 560 1/2.....	5.00
1 5/8 In.	Adjustable. For Planes No. 509 1/2, 515, 518, 519, 565, 565 1/2, 520.....	5.00

Prices of V & B Plane Parts



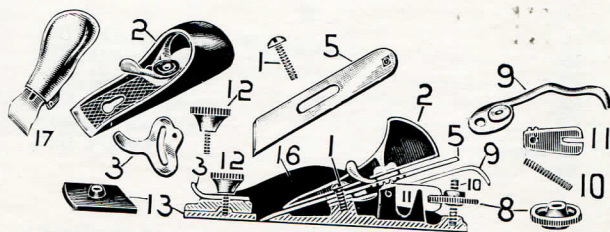
No.	Name of Part	No. of Plane	903 903C	904 904C	904½ 904½C	905 905C	906 906C	703 703C	704 704C	704½ 704½C	705 705C	706 706C	807 807C	808 808C
1	Cap Screw.....		\$0.10	\$0.10	\$0.10	\$0.10	\$0.10	\$0.10	\$0.10	\$0.10	\$0.10	\$0.10	\$0.10	\$0.10
2	Lever Cap.....		.60	.60	.60	.60	.80	.55	.55	.55	.55	.55	.55	.55
3	Lever Cap Screw.....		.10	.10	.10	.10	.10	.10	.10	.10	.10	.10	.10	.10
4	Frog Complete.....		.85	.85	.85	.85	.85	.85	.85	.85	.85	.85	.85	.85
5	Blade.....													
6	Blade Cap.....													
7	Y Adjusting Lever.....		.10	.10	.10	.10	.10	.10	.10	.10	.10	.10	.10	.10
8	Adjusting Nut.....		.20	.20	.20	.20	.20	.20	.20	.20	.20	.20	.20	.20
9	Lateral Adjusting Lever.....		.20	.20	.20	.20	.20	.20	.20	.20	.20	.20	.20	.20
10	Frog Screw.....		.10	.10	.10	.10	.10	.10	.10	.10	.10	.10	.10	.10
11	Frog Adjusting Screw.....		.10	.10	.10	.10	.10	.10	.10	.10	.10	.10	.10	.10
12	Plane Knob.....		.30	.30	.30	.30	.30	.30	.30	.30	.30	.30	.30	.30
13	Knob Bolt and Nut.....		.20	.20	.20	.20	.20	.20	.20	.20	.20	.20	.20	.20
14	Plane Handle.....		.40	.40	.40	.40	.40	.40	.40	.40	.40	.40	.40	.40
15	Handle Bolt and Nut.....		.20	.20	.20	.20	.20	.20	.20	.20	.20	.20	.20	.20
16	Plane Bottom.....		2.85	2.85	3.35	3.35	4.40	2.20	2.20	2.60	2.60	3.70	4.70	5.70
17	Plane Handle Screw.....				.10	.10	.10			.10	.10	.10	.10	.10
18	Frog Adjusting Plate.....		.10	.10	.10	.10	.10	.10	.10	.10	.10	.10	.10	.10

For prices of Single and Double Plane Blades see page 57

Add 10 per cent for Corrugated Bottoms.

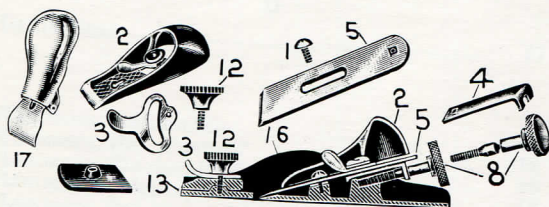
Prices of V & B Plane Parts

Block Planes



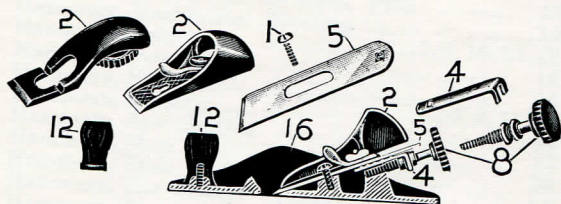
No.	Name of Part	No. of Plane	509½	515	518	519
1	Lever Cap Screw		\$0.10	\$0.10	\$0.10	\$0.10
2	Lever Cap		.20	.20		
3	Eccentric Lever		.10	.10		
5	Single Plane Blade				.10	.10
8	Adjusting Nut		.20	.20	For prices see page 57	
9	Lateral Adjusting Lever		.20	.20	.20	.20
10	Adjusting Nut Screw		.10	.10	.10	.10
11	Blade Adjusting Lever		.10	.10	.10	.10
12	Finger Rest Knob		.20	.20	.20	.20
13	Adjustable Throat Plate		.20	.20	.20	.20
16	Plane Bottom		1.40	1.50	1.40	1.50
17	Knuckled Joint Lever Cap				.75	.75

Block Planes



No.	Name of Part	No. of Plane	560	560½	565	565½
1	Lever Cap Screw		\$0.10	\$0.10	\$0.10	\$0.10
2	Lever Cap		.40	.30		.30
3	Eccentric Lever		.10	.10	.10	.10
4	Blade Adjusting Block		.20	.20	.20	.20
5	Single Plane Blade				For prices see page 57	
8	Adjusting Nut		.20	.20	.20	.20
12	Finger Rest Knob		.20	.20	.20	.20
13	Adjustable Throat Plate		.20	.20	.20	.20
16	Plane Bottom		1.20	1.20	1.50	1.50
17	Knuckled Joint Lever Cap				.75	

Block Planes



No.	Name of Part	No. of Plane	502	510	503	520
1	Lever Cap Screw				\$0.10	\$0.10
2	Lever Cap		\$0.20	\$0.20	.20	.20
4	Blade Adjusting Block				.20	.20
5	Single Plane Blade				For prices see page 57	
8	Adjusting Nut				.20	.20
12	Plane Knob			.20	.30	.30
16	Plane Bottom		.40	.50	.50	.60

INDEX

A		Page			Page
Axes, Boys'	32, 33	Hammers, Vanadium Nail	7
Axes, Camp	32, 33	Hammers, Vanadium Ripping	7
Axes, House	32, 33	Hatchets, Barreling	25
Axes, Hunters'	32, 33	Hatchets, Box	25
Axes, Men's	31	Hatchets, Broad	22, 27, 28
Axes, Scout Pattern Camp	32	Hatchets, Car Builders'	23
B			Hatchets, Claw	22, 27, 28
Bars, Carpenters' Wrecking	45	Hatchets, Flooring	22, 27
Bits, Countersink	52	Hatchets, Haines Pattern	24, 25
Bits, Reamer	52	Hatchets, Half	22, 26, 27, 28
Bits, Screw Driver	52	Hatchets, Lathing	23, 25, 26, 28
Braces, Ratchet	41, 42	Hatchets, Produce	25
Bull Points	45	Hatchets, Rig Builders'	23
C			Hatchets, Shingling	23, 24, 27, 28
Chisels, Brick	46	Hatchets, Tradesman's	24
Chisels, Bricklayers'	46	Hatchets, Underhill Pattern Lathing	26
Chisels, Cape	44	Hooks, Bar	54
Chisels, Carpenters' Wrecking	45	Hooks, Box	56
Chisels, Cold	43	Hooks, Conductor Pipe	56
Chisels, Concrete	45	Hooks, Hay	56
Chisels, Diamond Point	44	Hooks, Meat, Screw	54
Chisels, Floor	45	Hooks, Quarter	54
Chisels, Long Brick	46	Hooks, "S", Butchers'	54
Chisels, Plumbers'	46	N		
Chisels, Round Nose	44	Nippers, Double Duty Cutting	51
Chisels, Wood	46	Nippers, Farriers'	50
D			Nippers, Nail Cutting	50
Drills, Star	47	P		
H			Parers, Farriers' Hoof	51
Hammers, Automobile	18	Pin, Butchers' Block	54
Hammers, Bill Posters'	19	Pincers, Blacksmiths'	50
Hammers, Blacksmiths' Hand	16	Pincers, Carpenters'	50
Hammers, Bricklayers'	15	Pincers, Farriers'	50
Hammers, Bricklayers' Scutch	15	Planes, Block	38, 39
Hammers, Bumping	18	Planes, Drop Forged Unbreakable Steel	36, 37
Hammers, Chipping	16	Planes, Lincoln Cast Iron	37
Hammers, Dinging	18	Planes, Parts	57, 58, 59
Hammers, Drill Sharpening	16	Puller, Staple	51
Hammers, Electricians' 888	7	Punches, Belt	49
Hammers, Engineers'	15	Punches, Center	48
Hammers, Engineers' Double Face	15	Punches, Lining Up	48
Hammers, Farriers'	17	Punches, Machine	48
Hammers, Farriers' Turning	17	Punches, Prick	48
Hammers, Machinists' Ball Pein	13	S		
Hammers, Machinists' Cross Pein	13	Scrapers, Box	53
Hammers, Machinists' Straight Pein	13	Scrapers, Hog	53
Hammers, Machinists' Riveting	14	Scrapers, Ship	53
Hammers, Nail	7, 9, 10, 11, 12	Scutches, Bricklayers'	15
Hammers, Prospecting	16	Sets, Bricklayers'	46
Hammers, Radio	14	Sets, Nail	49
Hammers, Ripping	7, 9, 11, 12	Sets, Rivet	49
Hammers, Saw Setting	14	Star Drills	47
Hammers, Shoe	17	T		
Hammers, Tack	19	Tongs, Ice	55
Hammers, Tile Setters'	14	W		
Hammers, Tinnors' Paneing	14	Wrecking Bars	45
Hammers, Tinnors' Riveting	14			
Hammers, Tire	18			
Hammers, Tradesman's 999	7			